



Swavalambini

[Source: PIB](#)

Why in News?

The Ministry of Skill Development and Entrepreneurship (MSDE), in collaboration with [NITI Aayog](#) launched “**Swavalambini**” in Assam, Meghalaya and Mizoram.

What is Swavalambini?

- **About:** Swavalambini is a women entrepreneurship program that aims to empower females in **Northeast Higher Education Institutions (HEIs)** with an entrepreneurial mindset, resources, and mentorship for business success.
- **Program Structure:** MSDE, in collaboration with **Indian Institute of Entrepreneurship (IIE)**, Guwahati and NITI Aayog, launched a **stage-wise entrepreneurial process** including **Entrepreneurship Awareness Programme (EAP)**, **Women Entrepreneurship Development Programme (EDP)**, **Faculty Development Programme (FDP)**, and funding.
 - Successful ventures will be **recognized and awarded**, inspiring others and establishing a clear framework to scale women-led enterprises in India.
- **Expected Outcomes:** **10% of EDP trainees** expected to launch successful businesses.
 - Strengthens entrepreneurial culture in HEIs, making business creation a viable career path for women. Promotes women-led enterprises as a key driver of India's economic transformation.

How Does Swavalambini Align with National Policies?

- **National Education Policy (NEP) 2020:** Promotes **skill integration, industry** collaboration, and entrepreneurship-driven education.
 - Swavalambini builds on this by ensuring **financial and mentorship support** for women entrepreneurs.
- **Women Entrepreneurship Schemes:** Swavalambini strengthens initiatives like [Start-Up India](#), [Stand-Up India](#), [PM Mudra Yojana](#), and [Women Entrepreneurship Platform](#).
 - Swavalambini aligns with the [Union Budget 2025](#), which introduced a **Rs 10,000 crore start-up fund** and extended the **100% tax exemption on start-up profits for the first five years**, providing crucial financial support for emerging women-led enterprises.

Women Entrepreneurship Landscape in India

- **Total MSMEs in India:** Over 63 million, [Women-Owned MSME](#) 20% (12.39 million).
- **Employment Contribution:** Women-led MSMEs employ 22-27 million people.
- **India's Rank in Women Entrepreneurship:** India currently ranks 57th out of 65 nations, in the **Mastercard Index on Women Entrepreneurship (MIWE) 2021**.
 - India ranks **70th among 77 nations** in the **Global Female Entrepreneurship Index (FEI)** as estimated by the Global Entrepreneurship and Development Institute.
- **Top States with the Highest Share of Women-Led MSMEs:** **West Bengal** (23.42%), **Tamil**

Nadu (10.37%), **Telangana** (7.85%), **Karnataka** (7.56%), and **Andhra Pradesh** (6.76%).

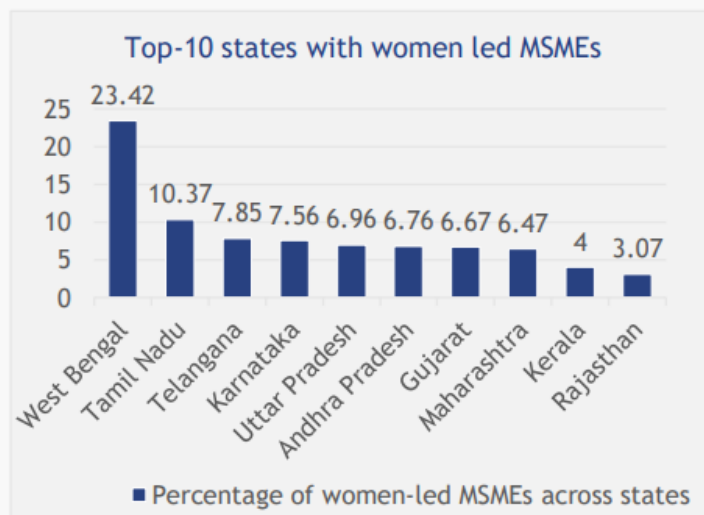
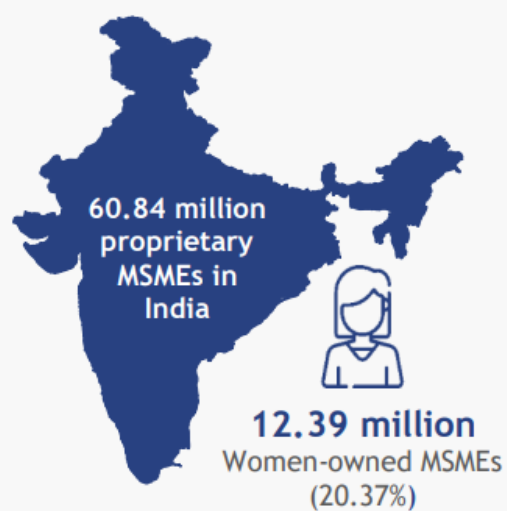
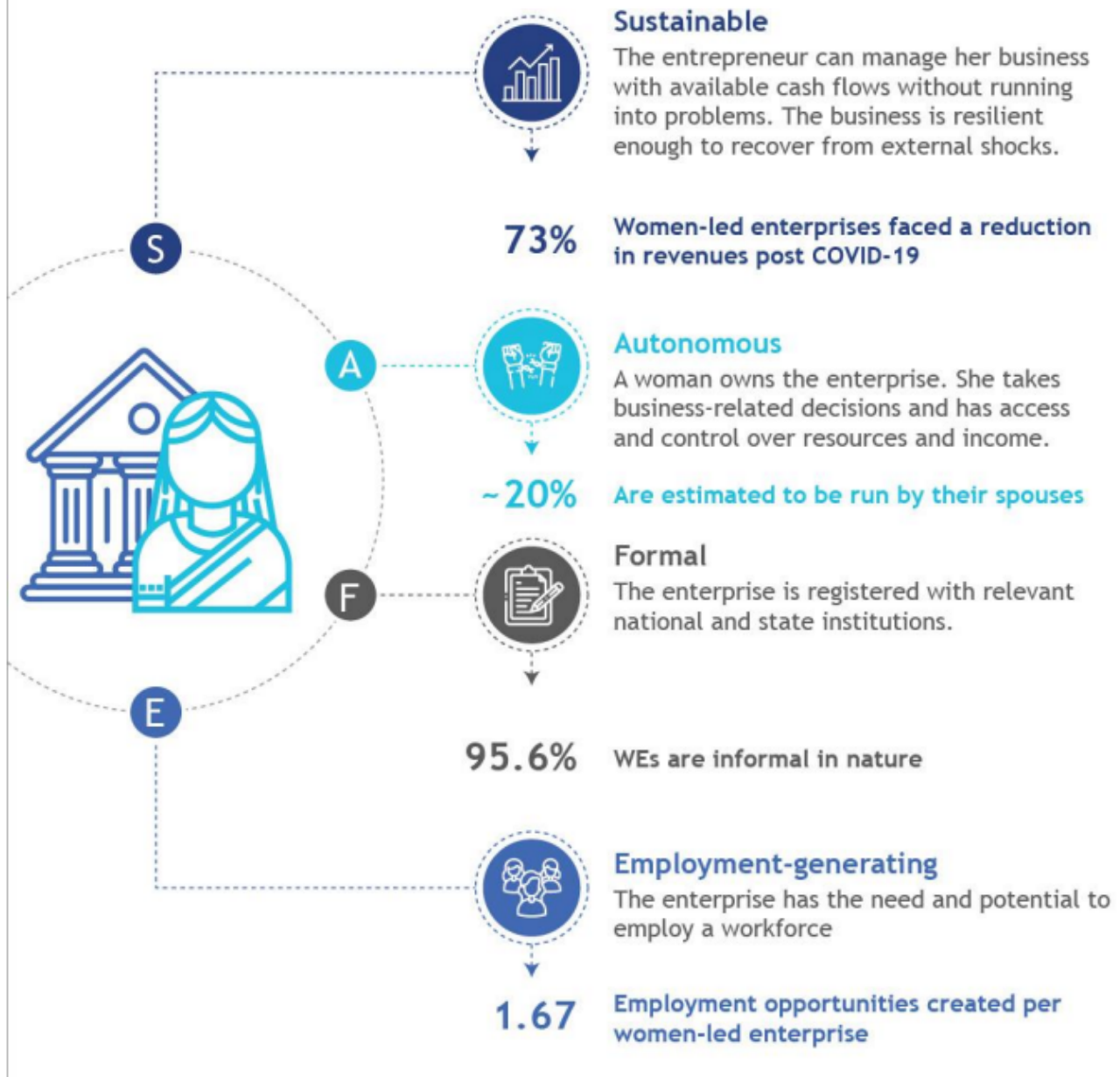


Figure 1: Share of wMSMEs and top-10 states in share of wMSMEs, Source: MoMSME annual report 2021-22



SAFE: Sustainable, autonomous, formal, and employment-generating



UPSC Civil Services Examination, Previous Year Questions (PYQs):

Q. What does venture capital mean? (2014)

- (a) A short-term capital provided to industries
- (b) A long-term start-up capital provided to new entrepreneurs
- (c) Funds provided to industries at times of incurring losses
- (d) Funds provided for replacement and renovation of industries

Ans: (b)

Q. With reference to 'Stand Up India Scheme', which of the following statements is/are correct? (2016)

1. Its purpose is to promote entrepreneurship among SC/ST and women entrepreneurs.
2. It provides for refinance through SIDBI.

Select the correct answer using the code given below:

- (a) 1 only
- (b) 2 only
- (c) Both 1 and 2
- (d) Neither 1 nor 2

Ans: (C)

Q. Pradhan Mantri MUDRA Yojana is aimed at (2016)

- (a) bringing the small entrepreneurs into formal financial system
- (b) providing loans to poor farmers for cultivating particular crops
- (c) providing pensions to old and destitute persons
- (d) funding the voluntary organisations involved in the promotion of skill development and employment generation

Ans: (a)

PDF Reference URL: <https://www.drishtiias.com/printpdf/swavalambini>

