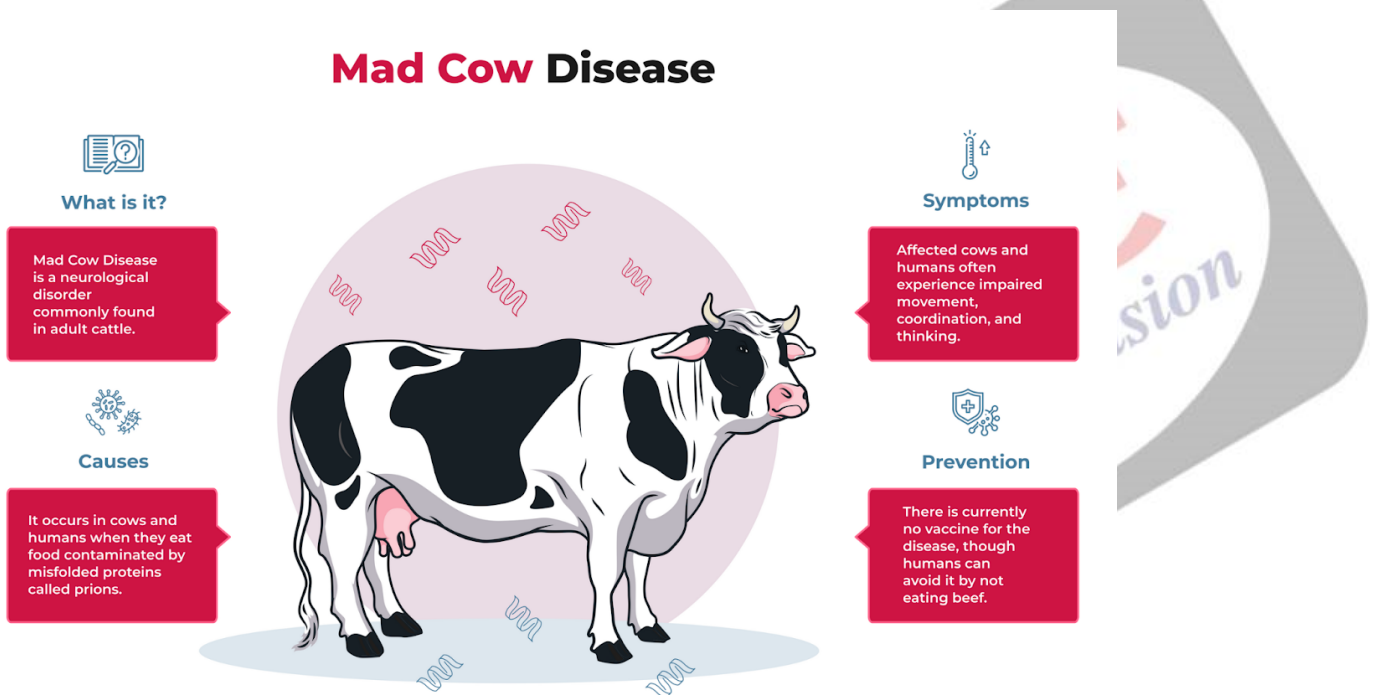




# Mad Cow Disease

## Why in News?

Recently, Brazil has halted its beef exports to China after a case of Mad Cow Disease was confirmed in the northern state of Para.



## What is Mad Cow Disease?

- **About:**
  - Also known as **Bovine Spongiform Encephalopathy (BSE)** is degenerative, transmissible, **slowly progressive, and a fatal infection that affects the central nervous system** of adult cattle.
- **Causes:**
  - BSE is caused by a **protein called a prion** normally found on cell surfaces, the normal prion protein changes into an abnormal prion protein that is harmful.
    - After getting altered, these proteins destroy the nervous system tissue- the brain and spinal cord.
  - The body of a sick cow **does not even know the abnormal prion** is there. Without knowing it is there, the **cow's body cannot fight off the disease.**
- **Transmission:**
  - A cow gets BSE by eating feed contaminated **with parts that came from another cow that was sick with BSE.**
- **Symptoms:**
  - A common sign of BSE in cows is incoordination. A sick cow has **trouble walking and getting up and may also act very nervous or violent.**

- It usually takes **four to six years from the time a cow** is infected with the abnormal prion to when it first shows symptoms of BSE. This is called the **incubation period**. During the incubation period, there is no way to tell that a cow has BSE by looking at it.
  - Once a cow starts to show symptoms, it gets sicker and sicker until it dies, usually within two weeks to six months.
- **Treatment:**
- There is **no treatment for BSE and no vaccine** to prevent it.

[Source: HT](#)

PDF Reference URL: <https://www.drishtias.com/printpdf/mad-cow-disease>

