



## Editorial Quiz (March 2024) - Part I

### Editorial Quiz (March 2024) - Part I (Date : 21-03-2024)

#### Question 1:

Regarding the Asian Infrastructure Investment Bank (AIIB), consider the following statements:

1. India is not only a Founding Member of AIIB but also boasts the largest project portfolio within the institution.
2. All powers of the Bank are vested in the Board of Governors, which is the highest decision-making body.
3. India holds the largest voting share in the AIIB, followed by China and Russia.

How many of the statements given above are **not** correct?

1. Only One
2. Only Two
3. All Three
4. None

**Correct Answer : 1**

#### Explanation

##### Asian Infrastructure Investment Bank (AIIB):

- India is not only a Founding Member of AIIB but also boasts the **largest project portfolio** within the institution. **Hence, statement 1 is correct.**
- All powers of the Bank are vested in the **Board of Governors**, which is the highest decision-making body. **Hence, statement 2 is correct.**
- **China** holds the largest voting share in the AIIB, followed by India and Russia. **Hence, statement 3 is not correct.**

[Read More...](#)

---

### Question 2:

Consider the following pairs:

Mission	Country
1. Luna-25	France
2. Gaganyaan	India
3. Odysseus	United States

Which of the pairs given above is/are **not** correctly matched?

- 1 Only
- 1 and 2 only
- 2 and 3 only
- 1,2 and 3

**Correct Answer : 1**

### Explanation

- **Luna 25** was a failed **Russian lunar lander mission** by Roscosmos in August 2023 that planned to land near the lunar south pole. **Hence, pair 1 is not correctly matched.**
- Gaganyaan is an Indian crewed orbital spacecraft intended to be the formative spacecraft of the Indian Human Spaceflight Programme. **Hence, pair 2 is correctly matched.**
- **Odysseus is the first U.S.** spacecraft to land on the moon since 1972. **Hence, pair 3 is correctly matched.**
- **Hence, option A is correct.**

[Read More...](#)

---

### Question 3:

Regarding the Mediterranean Sea, consider the following statements:

1. In the west, it is connected to the Atlantic Ocean via the narrow Strait of Gibraltar.
2. In the extreme northeast, it is connected to the Black Sea via the Dardanelles Strait, the Sea of

Marmara, and the Bosphorus Strait.

Which of the statements given above is/are correct?

1. 1 Only
2. 2 Only
3. Both 1 and 2
4. Neither 1 nor 2

**Correct Answer : 3**

## Explanation

### Mediterranean Sea:

- In the **west**, it is connected to the Atlantic Ocean via the narrow Strait of Gibraltar. **Hence, statement 1 is correct.**
- In the extreme northeast, it is connected to the **Black Sea** via the Dardanelles Strait, the Sea of Marmara, and the Bosphorus Strait. **Hence, statement 2 is correct.**



[Read More...](#)

## Question 4:

Regarding In Vitro Fertilization (IVF), consider the following statements:

1. It is a medical procedure aimed at helping individuals or couples experiencing fertility difficulties to achieve pregnancy.
2. It involves retrieving eggs from ovaries and manually combining them with sperm in a lab for fertilization.
3. The procedure can be performed using either the couple's own eggs and sperm or involve the use of eggs, sperm, or embryos from a donor.

How many of the statements given above are correct?

1. Only One
2. Only Two
3. All Three
4. None

**Correct Answer : 3**

### **Explanation**

#### **In Vitro Fertilization (IVF):**

- It is a medical procedure aimed at helping individuals or couples experiencing **fertility difficulties** to achieve pregnancy. **Hence, statement 1 is correct.**
- It involves **retrieving eggs** from ovaries and manually combining them with sperm in a lab for fertilization. **Hence, statement 2 is correct.**
- The procedure can be performed using either the **couple's own eggs** and sperm or involve the use of eggs, sperm, or embryos from a donor, who may be known or anonymous. **Hence, statement 3 is correct.**

[Read More...](#)

---

#### **Question 5:**

Regarding the Artemis Accords, consider the following statements:

1. Artemis Accords were established by the U.S. for setting common principles to govern civil exploration and the use of outer space for peaceful purposes.
2. India became the 27<sup>th</sup> country to sign the binding Artemis Accords.

Which of the statements given above is/are correct?

1. 1 Only
2. 2 Only
3. Both 1 and 2
4. Neither 1 nor 2

**Correct Answer : 1**

### **Explanation**

#### **Artemis Accords:**

- **Artemis Accords** were established by the U.S. for setting **common principles** to govern civil exploration and the use of outer space for peaceful purposes. **Hence, statement 1 is correct.**
- India became the 27<sup>th</sup> country to sign the **non-binding** Artemis Accords. **Hence, statement 2 is not correct.**

[Read More...](#)

---

#### **Question 6:**

Regarding Rashtriya Gram Swaraj Abhiyan (RGSA), consider the following statements:

1. It is a Central Sector Scheme under the Ministry of Agriculture and Farmer Welfare.
2. It is aimed at developing the governance capabilities of Panchayati Raj Institutions (PRIs).
3. The Revamped RGSA extends to all States and Union Territories (UTs) of the country including institutions of rural local government in non-Part IX areas, where Panchayats do not exist.

How many of the statements given above are correct?

1. Only One
2. Only Two
3. All Three
4. None

**Correct Answer : 2**

## Explanation

### Rashtriya Gram Swaraj Abhiyan (RGSA):

- The Rashtriya Gram Swaraj Abhiyan (RGSA), launched on April 24, 2018, under the **Ministry of Panchayati Raj**, India, aimed to enhance and fortify the Panchayati Raj System in rural areas from 2018-19 to 2021-22; it was later restructured into the **Centrally Sponsored Scheme** of Revamped Rashtriya Gram Swaraj Abhiyan (RGSA) for the period 2022-23 to 2025-26. **Hence, statement 1 is not correct.**
- It is aimed at developing the **governance capabilities** of Panchayati Raj Institutions (PRIs). **Hence, statement 2 is correct.**
- The Revamped RGSA extends to all States and Union Territories (UTs) of the country including institutions of rural local government in non-Part IX areas, where Panchayats do not exist. **Hence, statement 3 is correct.**

[Read More...](#)

---

### Question 7:

Regarding the National Policy for Rare Diseases 2021, consider the following statements:

1. It provides financial assistance of up to Rs. 20 lakhs for a one-time treatment and introduces a crowd-funding mechanism.
2. To access financial aid for rare disease treatment, patients from the local area can visit the nearest Centre of Excellence for assessment and to access benefits.

Which of the statements given above is/are **not** correct?

1. 1 Only
2. 2 Only
3. Both 1 and 2
4. Neither 1 nor 2

**Correct Answer : 4**

## Explanation

### National Policy for Rare Diseases 2021:

- It provides **financial aid** for single-time treatments up to Rs. 20 lakh, establishes a crowd-funding system, sets up a registry for rare diseases, and enables early detection. **Hence, statement 1 is**



**correct.**

- To access financial aid for rare disease treatment, patients from the local area can visit the nearest **Centre of Excellence** for assessment and to access benefits, with each Centre receiving a one-time grant of up to Rs. 5 crore for infrastructure development. **Hence, statement 2 is correct.**

[Read More...](#)

---

### Question 8:

Regarding the Aegean Sea, consider the following statements:

1. It is an arm of the Black Sea, located between the Greek peninsula on the west and Asia Minor on the east.
2. The Aegean is connected through the straits of the Dardanelles, the Sea of Marmara, and the Bosphorus to the Mediterranean Sea.

Which of the statements given above is/are correct?

1. 1 Only
2. 2 Only
3. Both 1 and 2
4. Neither 1 nor 2

**Correct Answer : 2**

### Explanation

#### Aegean Sea:

- It is an arm of the **Mediterranean Sea**, located between the Greek peninsula on the west and Asia Minor on the east. **Hence, statement 1 is not correct.**
- The Aegean is connected through the **straits of the Dardanelles**, the Sea of Marmara, and the Bosphorus to the Black Sea. **Hence, statement 2 is correct.**



[Read More...](#)

### Question 9:

Consider the following statements:

1. The standard borrowing limit for states is set at 3% of the Gross State Domestic Product (GSDP).
2. States are granted an additional 0.5% of their Gross State Domestic Product (GSDP) in borrowing capacity as a performance-based incentive for implementing power sector reforms.
3. Without the consent of the Government of India, a State cannot raise a loan if any portion of a loan previously provided by the Government of India or its predecessor remains outstanding.

How many of the statements given above are correct?

1. Only One
2. Only Two
3. All Three
4. None

**Correct Answer : 3**

### Explanation

- The **standard borrowing limit** for states is set at 3% of the Gross State Domestic Product



(GSDP). **Hence, statement 1 is correct.**

- States are granted an additional 0.5% of their **Gross State Domestic Product (GSDP)** in borrowing capacity as a performance-based incentive for implementing power sector reforms. **Hence, statement 2 is correct.**
- **Article 293 (3)** - A State may not without the consent of the Government of India raise any loan if there is still outstanding any part of a loan which has been made to the State by the Government of India or by its predecessor Government. **Hence, statement 3 is correct.**

[Read More...](#)

---

### Question 10:

Regarding the Samagra Shiksha Scheme, consider the following statements:

1. It is an integrated scheme for school education covering the entire gamut from pre-school to post-graduation.
2. It is a centrally sponsored scheme launched by the Ministry of Education and entails a 60:40 funding split between the Centre and most States.
3. It has been upgraded to align with the Sustainable Development Goal for Education and the new National Education Policy introduced in 2020.

How many of the statements given above are correct?

1. Only One
2. Only Two
3. All Three
4. None

**Correct Answer : 2**

### Explanation

#### Samagra Shiksha Scheme:

- It is an integrated scheme for school education covering the entire gamut from pre-school to class 12<sup>th</sup>. **Hence, statement 1 is not correct.**
- It is a **centrally sponsored scheme** launched by the Ministry of Education and entails a 60:40 funding split between the Centre and most States. **Hence, statement 2 is correct.**
- It has been upgraded to align with the **Sustainable Development Goal** for Education and the new National Education Policy introduced in 2020. **Hence, statement 3 is correct.**

[Read More...](#)

---

### Question 11:

Regarding National Education Policy (NEP) 2020, consider the following statements:

1. The National Policy on Education (NPE) was first formulated in 1968, based on the recommendations of Dr. K Kasturirangan.
2. The National Education Policy (NEP) 2020, India's first education policy of the 21st century, supersedes the prior National Policy on Education (NPE) 1986.

Which of the statements given above is/are correct?

1. 1 Only
2. 2 Only
3. Both 1 and 2
4. Neither 1 nor 2

**Correct Answer : 2**

### Explanation

#### National Education Policy (NEP) 2020:

- The **National Policy on Education (NPE)** was first formulated in **1968**, based on the recommendations of the **Kothari Commission**. **Hence, statement 1 is not correct.**
- The **National Education Policy (NEP) 2020**, India's first education policy of the 21<sup>st</sup> century, supersedes the prior National Policy on Education (NPE) 1986. **Hence, statement 2 is correct.**

[Read More...](#)

---

### Question 12:

Regarding Sati, consider the following statements:

1. Ishwar Chandra Vidyasagar initiated a campaign against the Sati practice by writing articles in Sambad Kaumudi, demonstrating that it was not prescribed in any Veda or epic.
2. Lord William Bentinck formally prohibited the practice of Sati in all territories under the Bengal Presidency through the Bengal Sati Regulation of 1829.

Which of the statements given above is/are correct?

1. 1 Only
2. 2 Only
3. Both 1 and 2
4. Neither 1 nor 2

**Correct Answer : 2**

### Explanation

- **Raja Rammohan Roy** initiated a campaign against the Sati practice by writing articles in Sambad Kaumudi, demonstrating that it was not prescribed in any Veda or epic. **Hence, statement 1 is not correct.**
- **Lord William Bentinck** formally prohibited the practice of Sati in all territories under the Bengal Presidency through the Bengal Sati Regulation of 1829. **Hence, statement 2 is correct.**

[Read More...](#)

---

### Question 13:

Which of the following is part of the Rule of Law?

1. Supremacy of the law
2. Equality before the law
3. Predominance of legal spirit

Select the correct answer using the code given below:

1. 1 Only
2. 1 and 2 Only
3. 2 and 3 Only
4. 1,2 and 3

**Correct Answer : 4**

## Explanation

- According to Professor **A.V. Dicey**, to achieve the supremacy of law the following three principles must be followed:
  - Supremacy of the law
  - Equality before the law
  - Predominance of legal spirit: the court should be free from impartiality and external influence.

Hence, option D is correct.

[Read More...](#)

---

## Question 14:

Consider the following statements:

1. The Drugs and Cosmetics Act, 1940, oversees the import, production, and distribution of drugs in India to ensure their safety, efficacy, and compliance with quality standards.
2. The classification of the medical device rules, along with the regulatory approval and registration by the CDSCO, is under the control of the Drug Controller General of India (DCGI).

Which of the statements given above is/are correct?

1. 1 Only
2. 2 Only
3. Both 1 and 2
4. Neither 1 nor 2

**Correct Answer : 3**

## Explanation

- The **Drugs and Cosmetics Act, 1940**, oversees the import, production, and distribution of drugs in India to ensure their safety, efficacy, and compliance with quality standards. **Hence, statement 1 is correct.**
- The **classification** of the medical device rules, along with the regulatory approval and registration by the CDSCO, is under the control of the Drug Controller General of India (DCGI). **Hence, statement 2 is correct.**

[Read More...](#)

---

**Question 15:**

Regarding the Clinical Trials Registry - India (CTRI), consider the following statements:

1. It is an online, free and searchable system for the prospective registration of all clinical studies being conducted in India and is managed by the ICMR-National Institute of Medical Statistics.
2. Registration of all regulatory clinical trials is purely optional according to the Drugs Controller General (India) (DCGI).

Which of the statements given above is/are correct?

1. 1 Only
2. 2 Only
3. Both 1 and 2
4. Neither 1 nor 2

**Correct Answer : 1**

**Explanation****Clinical Trials Registry - India (CTRI)**

- It is an **online, free and searchable** system for the prospective registration of all clinical studies being conducted in India and is managed by the **ICMR-National Institute of Medical Statistics**. **Hence, statement 1 is correct.**
- **Registration** of all regulatory clinical trials is **compulsory** according to the Drugs Controller General (India) (DCGI) and is also required by numerous journal editors, ethics committees, and medical colleges, who mandate registration in the Clinical Trials Registry-India (CTRI). **Hence, statement 2 is not correct.**

[Read More...](#)

---

**Question 16:**

Consider the following statements:

**Statement-I:** Solid Waste Management Rules 2016 replaced the Municipal Solid Wastes (Management and Handling) Rules, 2000.

**Statement-II:**They emphasize waste segregation at its origin, mandate manufacturers to manage sanitary and packaging waste and impose user fees on bulk waste generators for collection, disposal, and processing.

Which one of the following is correct in respect of the above statements?

1. Both Statement-I and Statement-II are correct and Statement-II is the correct explanation for Statement I
2. Both Statement-I and Statement-II are correct and Statement-II is not the correct explanation for Statement-I
3. Statement-I is correct but Statement-II is incorrect
4. Statement-I is incorrect but Statement-II is correct

**Correct Answer : 2**

### **Explanation**

#### **Solid Waste Management Rules 2016:**

- Solid Waste Management Rules 2016 **replaced** the Municipal Solid Wastes (Management and Handling) Rules, 2000. **Hence, statement-I is correct.**
- They emphasize **waste segregation at its origin**, mandate manufacturers to manage sanitary and packaging waste, and impose user fees on bulk waste generators for collection, disposal, and processing. **Hence, statement-II is correct.**

**Hence, option B is correct because both Statement-I and Statement-II are correct but Statement-II is not the correct explanation for Statement I.**

[Read More...](#)

---

#### **Question 17:**

Consider the following statements:

1. The Gaza Strip, located in the eastern Mediterranean basin, is bordered by Egypt to the southwest, Israel to the north and east, and the Mediterranean Sea to the west.
2. The territories of Gaza and the West Bank are separated from each other by Israeli territory.

Which of the statements given above is/are correct?



1. 1 Only
2. 2 Only
3. Both 1 and 2
4. Neither 1 nor 2

**Correct Answer : 3**

### **Explanation**

#### **Gaza Strip:**

- The **Gaza Strip**, located in the eastern Mediterranean basin, is bordered by Egypt to the southwest, Israel to the north and east, and the Mediterranean Sea to the west. **Hence, statement 1 is correct.**
- The territories of Gaza and the West Bank are separated from each other **by Israeli** territory. **Hence, statement 2 is correct.**
  - It is one of the most densely populated areas globally, with over 2 million residents living in a tiny area.
- The term "open-air prison" has been widely used by academics, activists, and journalists to characterize the conditions in Gaza.





[Read More...](#)

**Question 18:**

Regarding the U.N. World Food Programme (WFP), consider the following statements:

1. It was founded in 1961 by the Food and Agriculture Organization (FAO) and United Nations General Assembly (UNGA) with its headquarters in Geneva.
2. It collaborates closely with the Food and Agriculture Organization (FAO) and the International Fund for Agricultural Development (IFAD).

Which of the statements given above is/are correct?

1. 1 Only
2. 2 Only
3. Both 1 and 2
4. Neither 1 nor 2

**Correct Answer : 2**

## **Explanation**

### **U.N. World Food Programme (WFP):**

- It was founded in 1961 by the **Food and Agriculture Organization (FAO)** and United Nations General Assembly (UNGA) with its headquarters in **Rome, Italy. Hence, statement 1 is not correct.**
- It is also a member of the **United Nations Sustainable Development Group (UNSDG)**, a coalition of UN agencies and organizations aimed at fulfilling the Sustainable Development Goals (SDGs).
- It **collaborates** closely with the Food and Agriculture Organization (FAO) and the International Fund for Agricultural Development (IFAD), which respectively assist countries in formulating policies and legislation for sustainable agriculture and finance projects in impoverished rural regions. **Hence, statement 2 is correct.**

[Read More...](#)

---

### **Question 19:**

Regarding the Cairns Group, consider the following statements:

1. It is a coalition of 20 agricultural fair-trading countries which together account for almost 30 percent of the world's agricultural exports.
2. The Group comprising of developing nations only from six continents, pledges to attain equitable and sustainable agricultural trade for the benefit of the developing world.

Which of the statements given above is/are correct?

1. 1 Only
2. 2 Only
3. Both 1 and 2

4. Neither 1 nor 2

**Correct Answer : 1**

### **Explanation**

#### **Cairns Group:**

- It is a coalition of **20 agricultural fair-trading countries** (members) which together account for almost 30 percent of the world's agricultural exports. **Hence, statement 1 is correct.**
- Made up of **developed and developing countries** from six continents, the Group is committed to achieving free and fair trade in agriculture that provides real and sustainable benefits for the developing world. **Hence, statement 2 is not correct.**

[Read More...](#)

---

#### **Question 20:**

Regarding Rice, consider the following statements:

1. Rice cultivation thrives in hot and humid climates, particularly in regions with high humidity, prolonged sunshine, and a reliable water supply.
2. Rice is a carbohydrate-rich nutritional staple that offers quick energy but is low in nitrogenous substances and has negligible fat content.
3. Thailand is the largest exporter of rice in the world, followed by India.

How many of the statements given above are correct?

1. Only One
2. Only Two
3. All Three
4. None

**Correct Answer : 2**

### **Explanation**

## Rice:

- Rice, or *Oryza Sativa*, is commonly linked to **wet, humid climates** despite not being a tropical plant.
- Rice cultivation thrives in **hot and humid climates**, particularly in regions with high humidity, prolonged sunshine, and a reliable water supply. **Hence, statement 1 is correct.**
- Rice is a carbohydrate-rich nutritional staple that offers quick energy but is low in nitrogenous substances and has negligible fat content. **Hence, statement 2 is correct.**
- **India is the largest exporter** of rice in the world, followed by Thailand. **Hence, statement 3 is not correct.**

[Read More...](#)

---

## Question 21:

Regarding critical minerals, consider the following statements:

1. The Centre of Excellence on Critical Minerals" (CECM) role is to update India's list of critical minerals every three years and notify the critical mineral strategy periodically.
2. Khanij Bidesh India Ltd. (KABIL) is a joint venture company formed to secure a steady supply of critical and strategic minerals for the Indian domestic market.

How many of the statements given above are correct?

1. Only One
2. Only Two
3. All Three
4. None

**Correct Answer : 3**

## Explanation

### Critical minerals:

- The **Centre of Excellence on Critical Minerals (CECM)** role is to update India's list of critical minerals every three years and notify the critical mineral strategy periodically. **Hence, statement 1 is correct.**
- The committee identified **30 minerals** as critical for the country, with 24 minerals included in the list of critical and strategic minerals in Part D of Schedule 1 of the Mines And Minerals (Development And Regulation) Act, 1957 (MMDR Act).
- A joint venture company namely **Khanij Bidesh India Ltd. (KABIL)** has been incorporated with the objective to ensure consistent supply of critical and strategic minerals to Indian domestic

market. **Hence, statement 2 is correct.**

[Read More...](#)

---

### Question 22:

Consider the following:

**Statement-I:** Critical minerals, essential for economic development and national security, are indispensable for the future global economy, supporting technologies in sectors like high-tech electronics, telecommunications, transport, and defense.

**Statement-II:** The concentration of critical mineral extraction or processing in a few geographical locations, coupled with their limited availability, can result in supply chain vulnerabilities and potential disruptions in supply.

Which one of the following is correct in respect of the above statements?

1. Both Statement-I and Statement-II are correct and Statement-II is the correct explanation for Statement I
2. Both Statement-I and Statement-II are correct and Statement-II is not the correct explanation for Statement-I
3. Statement-I is correct but Statement-II is incorrect
4. Statement-I is incorrect but Statement-II is correct

**Correct Answer : 1**

### Explanation

#### Critical minerals:

- Critical minerals, essential for **economic development** and national security, are indispensable for the future global economy, supporting technologies in sectors like high-tech electronics, telecommunications, transport, and defense. **Hence, statement-I is correct.**
- The **concentration** of critical mineral extraction or processing in a few geographical locations, coupled with their limited availability, can result in supply chain vulnerabilities and potential disruptions in supply. **Hence, statement-II is correct.**

**Hence, option A is correct because both Statement-I and Statement-II are correct and Statement-II is the correct explanation for Statement I.**

[Read More...](#)

---



### Question 23:

Consider the following:

**Statement-I:**Semiconductors and displays are the foundation of modern electronics, driving the next phase of digital transformation under Industry 4.0.

**Statement-II:**Semiconductors, serving as the core of modern electronics and ICT products, are crucial components found in contemporary automobiles, household gadgets, and vital medical devices.

Which one of the following is correct in respect of the above statements?

1. Both Statement-I and Statement-II are correct and Statement-II is the correct explanation for Statement I
2. Both Statement-I and Statement-II are correct and Statement-II is not the correct explanation for Statement-I
3. Statement-I is correct but Statement-II is incorrect
4. Statement-I is incorrect but Statement-II is correct

**Correct Answer : 1**

### Explanation

#### Semiconductors:

- Semiconductors and displays are the **foundation of modern electronics** driving the next phase of digital transformation under **Industry 4.0. Hence, statement-I is correct.**
- Semiconductors, serving as the core of modern electronics and ICT products, are crucial components found in contemporary automobiles, household gadgets, and vital medical devices like ECG machines. **Hence, statement-II is correct.**

**Hence, option A is correct because both Statement-I and Statement-II are correct and Statement-II is the correct explanation for Statement I.**

[Read More...](#)

---

### Question 24:

Consider the following statements:

1. The Swachh Bharat Kosh Trust aims to collect Corporate Social Responsibility (CSR) funds from the corporate sector and donations from individuals and philanthropists to support the Swachh Bharat Abhiyan.
2. The Ministry of Finance granted the Trust exemptions under the Foreign Contributions (Regulation) Act (FCRA) to receive foreign contributions in a dedicated bank account.

Which of the statements given above is/are correct?

1. 1 Only
2. 2 Only
3. Both 1 and 2
4. Neither 1 nor 2

**Correct Answer : 1**

### **Explanation**

#### **Swachh Bharat Kosh Trust:**

- The Swachh Bharat Kosh Trust aims to collect Corporate Social Responsibility (CSR) funds from the corporate sector and donations from individuals and philanthropists to support the **Swachh Bharat Abhiyan. Hence, statement 1 is correct.**
- The **Ministry of Home Affairs (MHA)** granted the Trust exemptions under the Foreign Contributions (Regulation) Act (FCRA) to receive foreign contributions in a dedicated bank account. **Hence, statement 2 is not correct.**

[Read More...](#)

---

#### **Question 25:**

Regarding Refugee, consider the following statements:

1. A refugee is an individual who has left their country due to the threat of severe human rights abuses and persecution.
2. They are entitled to international protection under the UN Refugee Convention and its protocol.

Which of the statements given above is/are correct?

1. 1 Only

2. 2 Only
3. Both 1 and 2
4. Neither 1 nor 2

**Correct Answer : 3**

### **Explanation**

#### **Refugee:**

- A **refugee** is an individual who has left their country due to the threat of **severe human rights abuses** and persecution. **Hence, statement 1 is correct.**
- They are entitled to international protection under the **UN Refugee Convention** and its protocol. **Hence, statement 2 is correct.**

[Read More...](#)

---

#### **Question 26:**

Regarding Human papillomavirus (HPV), consider the following statements:

1. Human papillomavirus (HPV) is a common sexually transmitted infection that can affect the skin, genital area, and throat.
2. At least 14 types of Human Papillomavirus(HPV) have the potential to cause cancer, with HPV types 16 and 18 being the most oncogenic.

Which of the statements given above is/are correct?

1. 1 Only
2. 2 Only
3. Both 1 and 2
4. Neither 1 nor 2

**Correct Answer : 3**

### **Explanation**

### Human papillomavirus (HPV):

- Human papillomavirus (HPV) is a common **sexually transmitted** infection that can affect the skin, genital area, and throat. **Hence, statement 1 is correct.**
- At least 14 types of Human Papillomavirus (HPV) have the potential to cause cancer, with HPV **types 16 and 18** being the most oncogenic. **Hence, statement 2 is correct.**
- The government campaign will use a **quadrivalent vaccine**, to prevent infections, genital warts, and cancer caused by HPV types 16, 18, 6, and 11, which are generally common.

[Read More...](#)

---

### Question 27:

Regarding Tripura Tribal Areas Autonomous District Council (TTADC), consider the following statements:

1. It was formed under the sixth schedule of the Constitution in 1985 to ensure development and secure the rights and cultural heritage of the tribal communities.
2. It has only executive powers and covers nearly two-thirds of the state's geographical area.

Which of the statements given above is/are correct?

1. 1 Only
2. 2 Only
3. Both 1 and 2
4. Neither 1 nor 2

**Correct Answer : 1**

### Explanation

#### Tripura Tribal Areas Autonomous District Council (TTADC):

- The Tripura Tribal Areas Autonomous District Council (TTADC) was formed under the **sixth schedule** of the Constitution in 1985 to ensure development and secure the rights and cultural heritage of the tribal communities. **Hence, statement 1 is correct.**
- The TTADC, which has **legislative and executive** powers, covers nearly two-thirds of the state's geographical area. **Hence, statement 2 is not correct.**
  - The council comprises 30 members of which 28 are elected while two are nominated by the Governor.

[Read More...](#)

---

### Question 28:

Consider the following statements:

1. Grey Hydrogen is naturally occurring in the Earth's crust and is seen as a promising clean energy source, often found in combination with other molecules.
2. White hydrogen primarily derived from coal or lignite gasification or steam methane reformation (SMR) of natural gas or methane, typically involves carbon-intensive procedures.
3. White hydrogen deposits have been found across the world, including in the US, Eastern Europe, Russia, Australia, France, and other countries.

How many of the statements given above are correct?

1. Only One
2. Only Two
3. All Three
4. None

**Correct Answer : 1**

### Explanation

- **Grey Hydrogen** primarily derived from coal or lignite gasification or steam methane reformation (SMR) of natural gas or methane, typically involves carbon-intensive procedures. **Hence, statement 1 is not correct.**
- **White hydrogen** is **naturally occurring** in the Earth's crust and is seen as a promising clean energy source, often found in combination with other molecules. **Hence, statement 2 is not correct.**
- White hydrogen deposits have been found **across the world**, including in the US, Eastern Europe, Russia, Australia, France, and other countries. **Hence, statement 3 is correct.**

[Read More...](#)

### Question 29:

Regarding the Competition Commission of India (CCI), consider the following statements:

1. It is a statutory body established under the Competition Act, 2002.
2. It has the composition of a quasi-judicial body, with one chairperson and six additional members.

3. Members of the CCI are appointed by a panel comprising the Prime Minister, the Home Minister, and the leader of the opposition in Lok Sabha.

How many of the statements given above are correct?

1. Only One
2. Only Two
3. All Three
4. None

**Correct Answer : 2**

### **Explanation**

#### **Competition Commission of India (CCI):**

- Established in March 2009 under the **Competition Act, 2002**, the Competition Commission of India (CCI), a statutory body of the Government of India, aims to foster fair competition in the economy, ensuring a 'level playing field' for producers and enhancing market efficiency for consumer welfare. **Hence, statement 1 is correct.**
- It has the composition of a **quasi-judicial body**, with one chairperson and six additional members. Hence, statement 2 is correct.
- All members of the CCI are **appointed by** the Central Government. **Hence, statement 3 is not correct.**

[Read More...](#)

---

#### **Question 30:**

Regarding Spiti Valley, consider the following statements:

1. It is a cold desert mountain valley located in the northeastern part of Jammu Kashmir.
2. It is located in the rain shadow region of the Greater Himalayan ranges.
3. The valley is bounded by the districts of Kinnaur in the southeast, Kullu in the south, and the valleys of Zaskar & Ladakh in the north.

How many of the statements given above are correct?

1. Only One



2. Only Two
3. All Three
4. None

**Correct Answer : 2**

### **Explanation**

#### **Spiti Valley:**

- It is a cold desert mountain valley located in the northeastern part of **Himachal Pradesh**. **Hence, statement 1 is not correct.**
- It is located in the **rain shadow** region of the Greater Himalayan ranges. **Hence, statement 2 is correct.**
- The valley is bounded by the districts of Kinnaur in the southeast, Kullu in the south, and the valleys of Zaskar & Ladakh in the north. **Hence, statement 3 is correct.**

[Read More...](#)

---

#### **Question 31:**

Regarding the Deepor Beel, consider the following statements:

1. It is a permanent freshwater lake and also a bird sanctuary in Karnataka.
2. It is a riverine wetland located in a former channel of the Brahmaputra River, positioned south of the main river channel.

Which of the statements given above is/are correct?

1. 1 Only
2. 2 Only
3. Both 1 and 2
4. Neither 1 nor 2

**Correct Answer : 2**

## Explanation

### Deepor Beel:

- It is a permanent freshwater lake and also a bird sanctuary in Assam. **Hence, statement 1 is not correct.**
- It is a **riverine wetland** located in a former channel of the Brahmaputra River, positioned south of the main river channel. **Hence, statement 2 is correct.**

[Read More...](#)

---

### Question 32:

Regarding the National Judicial Data Grid (NJDG), consider the following statements:

1. The NJDG portal is a national repository of data relating to cases instituted, pending, and disposed of by the courts across the country.
2. It was built as part of Phase II of the e-Courts project, which is a Centrally Sponsored Scheme.

Which of the statements given above is/are correct?

1. 1 Only
2. 2 Only
3. Both 1 and 2
4. Neither 1 nor 2

**Correct Answer : 3**

### Explanation

#### National Judicial Data Grid (NJDG):

- The **NJDG portal is a national repository** of data relating to cases instituted, pending, and disposed of by the courts across the country. **Hence, statement 1 is correct.**
- It is a **database of orders**, judgments and case details of 18,735 District and subordinate Courts and High Courts created as an online platform under the e-Courts Project.
- Its key feature is that the data is updated in **real-time** and has granular data up to the Taluka level.
- It was built as part of Phase II of the e-Courts project, which is a **Centrally Sponsored Scheme**. **Hence, statement 2 is correct.**

**Question 33:**

Consider the following statements:

1. A navy whose operations are restricted close to the shore, where the water is muddy, is called a Brown Water Force.
2. Blue Water Force can carry out operations far from its borders, without being required to return to its home port to refuel or re-stock.

Which of the statements given above is/are correct?

1. 1 Only
2. 2 Only
3. Both 1 and 2
4. Neither 1 nor 2

**Correct Answer : 3**

**Explanation**

- Navies are classified in **terms of colors:**
  - A navy whose operations are restricted **close to the shore**, where the water is muddy, is called a **Brown Water Force**. **Hence, statement 1 is correct.**
  - A navy that can go farther out is called a **Green Water Force**. And then there is a Blue Water Force.
  - A **Blue Water Navy** is one that has the capacity to project itself over a much bigger maritime area than its maritime borders. Simply put, it is a Navy that can go into the vast, deep oceans of the world.
    - However, while most navies have the capacity to send ships into the deep oceans, a **Blue Water Force** is able to carry out operations far from its borders, without being required to return to its home port to **refuel or re-stock**. **Hence, statement 2 is correct.**

**Question 34:**

Regarding Clustered Regularly Interspaced Short Palindromic Repeats(CRISPR) Technology, consider the following statements:

1. It is a gene editing technology, which replicates the natural defense mechanisms in bacteria to fight virus attacks, using a special protein called Cas9.
2. CRISPR technology stands out for its simplicity, exceptional accuracy, and the need to introduce external genes.

Which of the statements given above is/are correct?

1. 1 Only
2. 2 Only
3. Both 1 and 2
4. Neither 1 nor 2

**Correct Answer : 1**

### **Explanation**

#### **CRISPR:**

- It is a **gene editing technology**, which replicates the natural defense mechanisms in bacteria to fight virus attacks, using a special protein called Cas9. **Hence, statement 1 is correct.**
- CRISPR technology stands out for its simplicity, superior accuracy, and the **absence of external gene** introduction. **Hence, statement 2 is not correct.**
- The mechanism often likened to the operations of 'cut-copy-paste' or 'find-replace' in computer programs, involves identifying and excising problematic stretches in the DNA sequence responsible for disease or disorder, replacing them with a 'correct' sequence using biochemical tools such as specific protein and RNA molecules.

[Read more...](#)

---

#### **Question 35:**

'Silphium', which was recently seen in the news is:

1. An ancient Roman Herb
2. An Artificial Intelligence Tool

3. An indigenously developed Coffee Variety
4. None of the above

**Correct Answer : 1**

### **Explanation**

#### **Silphium:**

- Silphium is an ancient **Roman Herb**.
- Today, silphium has disappeared, perhaps only from the region or maybe from our planet entirely, as **noted by Pliny**, who wrote that during his lifetime, only one stalk was found and sent to Emperor Nero as a curiosity around 54-68 AD.
- **Hence, option A is correct.**

[Read more...](#)

---

#### **Question 36:**

Consider the following:

**Statement-I:** The genome encompasses an organism's entire genetic material, with the human genome being largely consistent among individuals, albeit with minor variations in a small portion of the DNA.

**Statement-II:** Each genome comprises the complete set of instructions required for constructing and sustaining an organism, with the human genome consisting of over 3 billion DNA base pairs.

Which one of the following is correct in respect of the above statements?

1. Both Statement-I and Statement-II are correct and Statement-II is the correct explanation for Statement I
2. Both Statement-I and Statement-II are correct and Statement-II is not the correct explanation for Statement-I
3. Statement-I is correct but Statement-II is incorrect
4. Statement-I is incorrect but Statement-II is correct

**Correct Answer : 1**

## Explanation

### Genome:

- The genome encompasses an organism's **entire genetic material**, with the human genome being largely consistent among individuals, albeit with minor variations in a small portion of the DNA. **Hence, statement-I is correct.**
- Each genome comprises the complete set of instructions required for constructing and sustaining an organism, with the human genome consisting of over **3 billion DNA base pairs**. **Hence, statement-II is correct.**
- **Hence, option A is correct because both Statement-I and Statement-II are correct and Statement-II is the correct explanation for Statement I.**

[Read more...](#)

---

### Question 37:

Regarding Golan Heights, consider the following statements:

1. It is surrounded by the Jordan River and the Sea of Galilee to the west, Mount Hermon to the north, the seasonal Wadi Al-Ruqqād River to the east, and the Yarmūk River to the south.
2. Israel seized the Golan Heights from Syria in the closing stages of the 1967 Six-Day War.

Which of the statements given above is/are correct?

1. 1 Only
2. 2 Only
3. Both 1 and 2
4. Neither 1 nor 2

**Correct Answer : 3**

## Explanation

### Golan Heights:

- It is surrounded by the **Jordan River** and the Sea of Galilee to the west, Mount Hermon to the north, the seasonal Wadi Al-Ruqqād River to the east, and the Yarmūk River to the south. **Hence, statement 1 is correct.**
- Israel seized the Golan Heights from Syria in the closing stages of the 1967 **Six-Day War**. **Hence, statement 2 is correct.**



[Read more...](#)

---

**Question 38:**

Regarding Household Consumption Expenditure Survey, consider the following statements:

1. It is usually conducted by the Reserve Bank of India every five years.
2. It seeks to estimate household Monthly Per Capita Consumption Expenditure (MPCE) and its distribution, delineating between rural and urban sectors.
3. The data plays a key role in reviewing critical economic indicators, including the Gross Domestic Product (GDP), poverty levels, and Consumer Price Inflation (CPI).

How many of the statements given above are correct?

1. Only One
2. Only Two
3. All Three
4. None

**Correct Answer : 2**

**Explanation**

**Household Consumption Expenditure Survey:**

- It is usually conducted by the **National Statistical Office (NSO)** every five years. **Hence, statement 1 is not correct.**
- It seeks to estimate household **Monthly Per Capita Consumption Expenditure (MPCE)** and its distribution, delineating between rural and urban sectors. **Hence, statement 2 is correct.**
- The data plays a key role in reviewing critical economic indicators, including the Gross Domestic Product (GDP), poverty levels, and Consumer Price Inflation (CPI). **Hence, statement 3 is correct.**

[Read more...](#)

---

**Question 39:**

Consider the following statements:

1. The WTO's Appellate Body is composed of seven Members who are appointed by the Dispute Settlement Body (DSB) to serve a four-year term.
2. The DSB can set up dispute settlement panels, send matters to arbitration, oversee the implementation of recommendations, and permit the suspension of concessions in case of non-compliance.

Which of the statements given above is/are **not** correct?

1. 1 Only
2. 2 Only
3. Both 1 and 2
4. Neither 1 nor 2

**Correct Answer : 4**

### **Explanation**

- The **WTO's Appellate Body** is composed of seven Members who are appointed by the **Dispute Settlement Body (DSB)** to serve for four-year terms. **Hence, statement 1 is correct.**
- The DSB can set up dispute settlement panels, send matters to arbitration, accept reports from panels, the Appellate Body, and arbitration, oversee the **implementation of recommendations** and rulings, and permit the suspension of concessions if there is non-compliance with those recommendations and rulings. **Hence, statement 2 is correct.**

[Read more...](#)

---

### **Question 40:**

Consider the following statements:

1. The mismanaged waste index is the ratio of the mismanaged waste and the total waste.
2. Plastic Overshoot Day is determined based on a country's Mismanaged Waste Index (MWI).

Which of the statements given above is/are correct?

1. 1 Only
2. 2 Only
3. Both 1 and 2

4. Neither 1 nor 2

**Correct Answer : 3**

### Explanation

- The **mismanaged waste index** is the ratio of the mismanaged waste and the total waste. **Hence, statement 1 is correct.**
- **Plastic Overshoot Day** is determined based on a country's Mismanaged Waste Index (MWI). **Hence, statement 2 is correct.**

[Read more...](#)

---

### Question 41:

Consider the following pairs:

	Island	Country
1.	Agalega	China
2.	Reunion Island	France
3.	Diego Garcia	United Kingdom

Which of the pairs given above is/are correctly matched?

1. 1 and 2 only
2. 2 and 3 only
3. 3 only
4. 1, 2 and 3

**Correct Answer : 2**

### Explanation

- **Agalega Islands**, a two-island dependency of **Mauritius**, in the western Indian Ocean. It consists of North Island and South Island. **Hence, pair 1 is not correctly matched.**
- Reunion is an island of the Mascarene Islands that is a **French** overseas department and overseas

region. **Hence, pair 2 is correctly matched.**

- **Diego Garcia** is the only inhabited island in British Indian Ocean Territory, an overseas territory of the United Kingdom. **Hence, pair 3 is correctly matched.**

[Read more...](#)

---

#### Question 42:

Regarding Greater Adjutant Storks, consider the following statements:

1. Once widespread in South and Southeast Asia, the Greater Adjutant stork is now among the most endangered species of its kind globally.
2. Only three breeding grounds are known of it, all located in India.
3. It is listed in Schedule I Wildlife (Protection) Act, 1972.

How many of the statements given above are correct?

1. Only One
2. Only Two
3. All Three
4. None

**Correct Answer : 2**

#### Explanation

#### Greater Adjutant Storks:

- Once widespread in South and Southeast Asia, the Greater Adjutant stork is now among the **most endangered species** of its kind globally. **Hence, statement 1 is correct.**
- There are only three known breeding grounds – one in Cambodia and two in India (Assam and Bihar). **Hence, statement 2 is not correct.**
- It is listed in **Schedule I** of the Wildlife (Protection) Act, 1972. **Hence, statement 3 is correct.**

[Read more...](#)

---

#### Question 43:

Which of the following will lead to the disqualification of a member of parliament under the tenth schedule of the constitution?

1. If he voluntarily gives up membership of the political party on whose ticket he is elected to the House.
2. If he votes or abstains from voting in the House contrary to any direction given by his political party.
3. If any independently elected member joins the ruling party.

Select the correct answer using the code given below:

1. 1 only
2. 1 and 2 only
3. 2 and 3 only
4. 1, 2 and 3

**Correct Answer : 2**

### **Explanation**

#### **Disqualification Under Tenth Schedule:**

- A member incurs disqualification under the **anti-defection law**:
- If he **voluntarily gives up** the membership of the political party on whose ticket he is elected to the House. **Hence, statement 1 is correct.**
- If he **votes or abstains** from voting in the House contrary to any direction given by his political party. **Hence, statement 2 is correct.**
- If any independently elected member joins **any political party**. **Hence, statement 3 is not correct.**
- If any nominated member joins any political party after the **expiry of six months**.
- **Hence, option B is correct**

[Read more...](#)

---

#### **Question 44:**

##### **Minerals Security Partnership (MSP):**

- It is an initiative by the **United States** to bolster critical mineral supply chains. **Hence, statement 1 is not correct.**
- The alliance aims to ensure that countries can fully benefit economically from their **geological resources** by responsibly producing, processing, and recycling critical minerals. **Hence, statement 2 is correct.**

- The focus of the grouping would be on the supply chains of minerals such as Cobalt, Nickel, Lithium, and also the **17 “rare earth” minerals. Hence, statement 3 is correct.**

[Read more...](#)

1. Only One
2. Only Two
3. All Three
4. None

**Correct Answer : 2**

### **Explanation**

#### **Minerals Security Partnership (MSP):**

- It is an initiative by the **United States** to bolster critical mineral supply chains. **Hence, statement 1 is not correct.**
- The alliance aims to ensure that countries can fully benefit economically from their **geological resources** by responsibly producing, processing, and recycling critical minerals. **Hence, statement 2 is correct.**
- The focus of the grouping would be on the supply chains of minerals such as Cobalt, Nickel, Lithium, and also the **17 “rare earth” minerals. Hence, statement 3 is correct.**

[Read more...](#)

---

#### **Question 45:**

Regarding the Centre for Development of Advanced Computing (C-DAC), consider the following statements:

1. It is the apex research and development wing of the Ministry of Electronics and Information Technology.
2. It was set up to build supercomputers in the context of the denial of the import of supercomputers by the USA.
3. C-DAC built India’s first indigenously built supercomputer, the Param 8000, in 1991.

How many of the statements given above are **not** correct?

1. Only One

2. Only Two
3. All Three
4. None

**Correct Answer : 4**

### **Explanation**

#### **Centre for Development of Advanced Computing (C-DAC):**

- It is the **apex research** and development wing of the Ministry of Electronics and Information Technology. **Hence, statement 1 is correct.**
- It was set up to build Supercomputers in the context of the denial of the import of Supercomputers by the USA. **Hence, statement 2 is correct.**
- C-DAC built India's first indigenously built supercomputer **Param 8000** in 1991. **Hence, statement 3 is correct.**

[Read more...](#)

---

#### **Question 46:**

Consider the following statements:

1. An asylum seeker is an individual who asserts refugee status but has yet to undergo a formal assessment, transitioning to refugee status upon a successful evaluation of their claim.
2. Refugee Status Determination (RSD) is a legal procedure employed by governments or the UNHCR to ascertain an asylum seeker's refugee status under international, national, or regional legislation.

Which of the statements given above is/are **not** correct?

1. 1 Only
2. 2 Only
3. Both 1 and 2
4. Neither 1 nor 2

**Correct Answer : 4**



## Explanation

- An **asylum seeker** is an individual who asserts refugee status but has yet to undergo a formal assessment, transitioning to refugee status upon a successful evaluation of their claim. **Hence, statement 1 is correct.**
- **Refugee Status Determination (RSD)** is a legal procedure employed by governments or the UNHCR to ascertain an asylum seeker's refugee status under international, national, or regional legislation. **Hence, statement 2 is correct.**

[Read more...](#)

---

### Question 47:

Regarding the Genome India Project, consider the following statements:

1. The Genome India Project is a gene mapping project sanctioned by the Department of Biotechnology.
2. This project will enable researchers to study genetic variations specific to India's population groups, facilitating the customization of drugs and therapies.
3. The Indian Biological Data Centre (IBDC), inaugurated in 2022, will store the entire dataset and make it available as a digital public good or research, being the country's only databank.

How many of the statements given above are **not** correct?

1. Only One
2. Only Two
3. All Three
4. None

**Correct Answer : 4**

## Explanation

### Genome India Project:

- The Genome India Project is a **gene mapping project** sanctioned by the Department of Biotechnology. **Hence, statement 1 is correct.**
- This project will enable researchers to study **genetic variations** specific to India's population groups, facilitating the customization of drugs and therapies. **Hence, statement 2 is correct.**
- The **Indian Biological Data Centre (IBDC)**, inaugurated in 2022, will store the entire dataset and make it available as a digital public good or research, being the country's only databank.

Hence, statement 3 is correct.

[Read more...](#)

---

**Question 48:**

Quartet Road Map and Arab Peace Initiative are often seen in the news in the context of:

1. Iran-Israel
2. Israel-Palestine
3. Iran-Saudia Arabia
4. Iran-United States

**Correct Answer : 2**

**Explanation**

**Israel-Palestine:**

- Quartet Road Map and Arab Peace Initiative are related to the peace initiative between **Israel and Palestine**.
- Hence, option B is correct.

[Read more...](#)

---

**Question 49:**

Regarding the Black Sea Grain initiative, consider the following statements:

1. It endeavors to tackle escalating food prices emanating from supply chain disruptions because of the Russian-Ukrainian conflict.
2. The deal put in place a Joint Coordination Centre (JCC), comprising senior representatives from Russia, Turkey, Ukraine, and the UN for oversight and coordination.

Which of the statements given above is/are correct?

1. 1 Only
2. 2 Only
3. Both 1 and 2
4. Neither 1 nor 2

**Correct Answer : 3**

### **Explanation**

#### **Black Sea Initiative:**

- The Black Sea Grain initiative endeavors to tackle escalating food prices emanating from supply chain disruptions because of the **Russian-Ukrainian** conflict. **Hence, statement 1 is correct.**
- The deal put in place a **Joint Coordination Centre (JCC)**, comprising senior representatives from Russia, Turkey, Ukraine, and the UN for oversight and coordination. **Hence, statement 2 is correct.**

[Read more...](#)

---

#### **Question 50:**

Regarding Pradhan Mantri Kisan Sampada Yojana (PMKSY), consider the following statements:

1. It is a Centrally Sponsored Scheme.
2. It offers capital subsidies ranging from 35% to 75% of the eligible project cost, with a maximum specified limit, to investors for infrastructure, logistic projects, and food processing units.
3. The objective of PMKSY is to supplement agriculture, modernize processing, and decrease Agri-Waste.

How many of the statements given above are correct?

1. Only One
2. Only Two
3. All Three
4. None

**Correct Answer : 2**

## **Explanation**

### **Pradhan Mantri Kisan Sampada Yojana (PMKSY):**

- It is a **Central Sector Scheme**. Hence, **statement 1 is not correct**.
- It offers **capital subsidies** ranging from 35% to 75% of the eligible project cost, with a maximum specified limit, to investors for infrastructure, logistic projects, and food processing units. Hence, **statement 2 is correct**.
- The objective of PMKSY is to supplement agriculture, modernize processing, and decrease Agri-Waste. Hence, **statement 3 is correct**.

[Read more...](#)

---

### **Question 51:**

Regarding the Gini coefficient, consider the following statements:

1. It is a measure of the distribution of income across a population.
2. It is often used as a gauge of economic inequality, measuring income distribution or, less commonly, wealth distribution among a population.
3. A higher Gini index indicates greater inequality, with high-income individuals receiving much larger percentages of the total income of the population.

How many of the statements given above are correct?

1. Only One
2. Only Two
3. All Three
4. None

**Correct Answer : 3**

## **Explanation**

### **Gini coefficient:**

- The Gini index, or **Gini coefficient**, is a measure of the distribution of income across a population. Hence, **statement 1 is correct**.
- It is often used as a **gauge of economic inequality**, measuring income distribution or, less

commonly, wealth distribution among a population. **Hence, sentence 2 is correct.**

- A higher Gini index indicates greater inequality, with high-income individuals receiving much larger percentages of the total income of the population. **Hence, statement 3 is correct.**

[Read more...](#)

---

### Question 52:

Consider the following statements:

1. The superintendence, direction, and control of the preparation of electoral rolls and the conduct of all elections to the municipalities shall be vested in the state election commission.
2. The responsibility to make provisions concerning all matters relating to elections to the municipalities though lies solely with the parliament.

Which of the statements given above is/are correct?

1. 1 Only
2. 2 Only
3. Both 1 and 2
4. Neither 1 nor 2

**Correct Answer : 1**

### Explanation

- The superintendence, direction, and control of the preparation of electoral rolls and the conduct of all elections to the municipalities shall be vested in the **state election commission. Hence, statement 1 is correct.**
- The **state legislature** may make provisions concerning all matters relating to elections to the municipalities. **Hence, statement 2 is not correct.**

[Read more...](#)

---

### Question 53:

Regarding the Global Biodiversity Framework Fund, consider the following statements:

1. It will help countries achieve the 23 targets set under the Kunming-Montreal Global Biodiversity Framework (KMGBF).
2. It will be managed by the Global Environment Facility (GEF) and raise funds through private, philanthropic, and government investments.
3. Decisions of the GBF Fund Council are to be taken by majority vote, along the lines of the Global Environment Facility(GEF) Instrument.

How many of the statements given above are **not** correct?

1. Only One
2. Only Two
3. All Three
4. None

**Correct Answer : 1**

### **Explanation**

#### **Global Biodiversity Framework Fund:**

- It will help countries achieve the 23 targets set under the **Kunming-Montreal Global Biodiversity Framework (KMGBF)**. **Hence, statement 1 is correct.**
- It will be managed by the **Global Environment Facility (GEF)** and raise funds through private, philanthropic, and government investments. **Hence, statement 2 is correct.**
- Decisions of the **GBF Fund Council** are to be taken by consensus, along the lines of the Global Environment Facility(GEF) Instrument. **Hence, statement 3 is not correct.**

[Read more...](#)

---

#### **Question 54:**

Regarding Mutual Funds, consider the following statements:

1. A mutual fund pools money from investors to invest in securities (debt, equity, or both) on their behalf, charging a small management fee.
2. Mutual Fund is the only security that is managed by the Reserve Bank of India.

Which of the statements given above is/are correct?

1. 1 Only

2. 2 Only
3. Both 1 and 2
4. Neither 1 nor 2

**Correct Answer : 1**

### **Explanation**

#### **Mutual Fund:**

- A mutual fund pools money from investors to **invest in securities** (debt, equity, or both) on their behalf, charging a small management fee. **Hence, statement 1 is correct.**
- **Securities and Exchange Board of India (SEBI)** is the **regulatory body** to control and regulate the securities market and mutual funds industry in India. **Hence, statement 2 is not correct.**
- Infrastructure Investment Trust (InvIT) and Real Estate Investment Trust (REITs) are examples of mutual funds.

[Read more...](#)

---

#### **Question 55:**

Regarding Corporate Social Responsibility (CSR), consider the following statements:

1. India was among the first countries globally to mandate Corporate Social Responsibility (CSR) for corporations under the Companies Act, 2013.
2. India is perhaps the only country that makes both the spending and reporting of CSR obligations mandatory.
3. Every eligible company must form a Corporate Social Responsibility Committee comprising a minimum of three directors, including at least one independent director.

How many of the statements given above are not correct?

1. Only One
2. Only Two
3. All Three
4. None



**Correct Answer : 3**

## **Explanation**

### **Corporate Social Responsibility (CSR):**

- India was among the **first countries** globally to mandate Corporate Social Responsibility (CSR) for corporations under the Companies Act, 2013. **Hence, statement 1 is correct.**
- India is perhaps the **only country** that makes both the **spending and reporting** of CSR obligations mandatory. **Hence, statement 2 is correct.**
- Every eligible company must form a **Corporate Social Responsibility Committee** comprising a minimum of three directors, including at least one independent director. **Hence, statement 3 is correct.**

[Read more...](#)

---

### **Question 56:**

Regarding the Judge of the High Court, consider the following statements:

1. He holds office until he attains the age of 65 years.
2. He can resign his office by writing to the president.
3. He can be removed from his office by the President on the recommendation of the Parliament.

How many of the statements given above are **not** correct?

1. Only One
2. Only Two
3. All Three
4. None

**Correct Answer : 1**

## **Explanation**

### **Judge of the High Court:**

- He holds office until he attains the age of **62 years**. **Hence, statement 1 is not correct.**
- He can resign his office by writing to the president. **Hence, statement 2 is correct.**
- He can be removed from his office by the President on the recommendation of the Parliament. **Hence, statement 3 is correct.**

[Read more...](#)

---

**Question 57:**

Regarding India-Nepal Relations, consider the following statements:

1. Nepal borders five Indian states, spanning over 1850 km, including Assam, West Bengal, Bihar, Uttar Pradesh, and Uttarakhand.
2. Under a revised Treaty of Transit, Nepal now has access to India's inland waterways and ports like Haldia, Kolkata, Paradip etc, for third-country trade.

Which of the statements given above is/are correct?

1. 1 Only
2. 2 Only
3. Both 1 and 2
4. Neither 1 nor 2

**Correct Answer : 2**

**Explanation**

**India-Nepal Relations:**

- Nepal shares a border of over 1850 km with **five Indian states - Sikkim**, West Bengal, Bihar, Uttar Pradesh, and Uttarakhand. **Hence, statement 1 is not correct.**
- Nepal has been granted access to **India's inland waterways**, including ports like Haldia, Kolkata, Paradip, and Visakhapatnam for third-country trade, through a revised Treaty of Transit. **Hence, statement 2 is correct.**

[Read More...](#)

---

**Question 58:**

Consider the following statements:

1. A municipal corporation comprises the council, standing committees, and the commissioner as its authorities.

2. The Council, as per the 74<sup>th</sup> Constitutional Amendment Act, includes elected Councilors and nominated members.
3. In most states, the Council is headed by a Mayor, supported by a Deputy Mayor, elected for a one-year term, primarily serving as a ceremonial head and presiding over council meetings.

How many of the statements given above are correct?

1. Only One
2. Only Two
3. All Three
4. None

**Correct Answer : 3**

### Explanation

- A municipal corporation has three authorities: **the council, the standing committees, and the commissioner. Hence, statement 1 is correct.**
- The Council, governed by the **74<sup>th</sup> Constitutional Amendment Act**, comprises elected Councilors and nominated individuals with municipal administration expertise, serving as the corporation's deliberative and legislative body. **Hence, statement 2 is correct.**
- The Council is led by a **Mayor**, aided by a Deputy Mayor, elected in most states for a one-year term, primarily serving as a ceremonial head and presiding over council meetings. **Hence, statement 3 is correct.**

[Read More...](#)

### Question 59:

Consider the following pairs:

Islands	Dispute Between Countries
1. Scarborough Shoal	Malaysia, India
2. Paracel Island	China, Taiwan, Vietnam
3. Spratly Island	China, Taiwan, Nepal

Which of the pairs given above is/are correctly matched?

1. 2 Only
2. 1 and 2 Only
3. 2 and 3 only
4. 1, 2 and 3

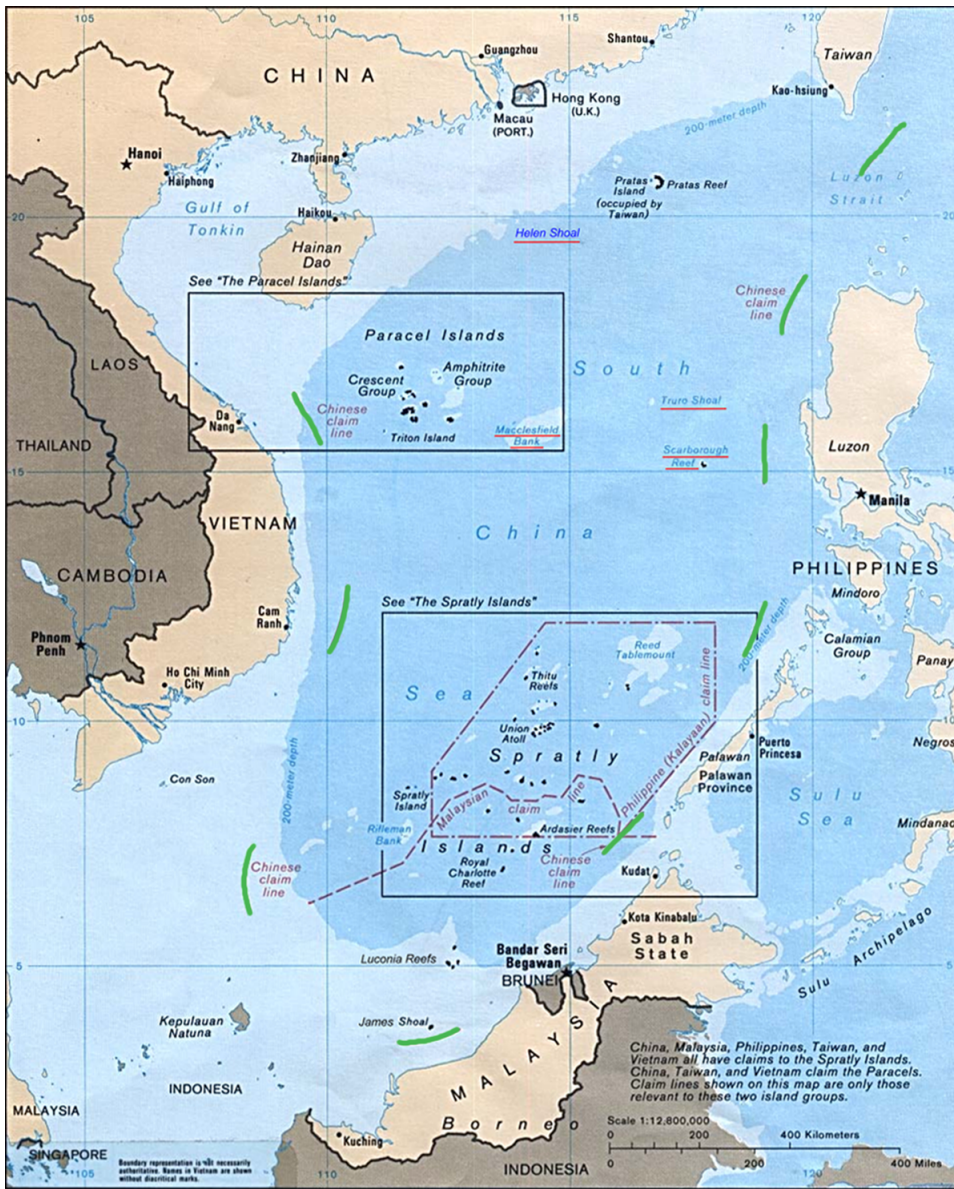
**Correct Answer : 1**

## **Explanation**

### **Disputed Territories:**

- The **Scarborough Shoal** is claimed by the Philippines, China, and Taiwan. **Hence, pair 1 is not correctly matched.**
  - The **Philippines and China** lay claim to the Scarborough Shoal but sovereignty has never been established and at present it remains effectively under **Beijing's control**.C.
- The **Paracel Islands** are claimed by China, Taiwan, and Vietnam. **Hence, pair 2 is correctly matched.**
- The **Spratly Islands** are claimed by China, Taiwan, Vietnam, Brunei, and the Philippines. **Hence, pair 3 is not correctly matched.**
  - China says it has centuries-old ties with the **Paracel and Spratly island** chains as they were once an integral part of the Chinese nation. But **Vietnam** disputes the claim, saying it has actively ruled over both the Paracels and the Spratlys since the 17<sup>th</sup> Century — and has the documents to prove it.
- **Hence, option A is correct.**





[Read More...](#)

**Question 60:**

Regarding the Prevention of Corruption (Amendment) Act (PCA), 2018, consider the following statements:

1. It aimed to align the PCA with the United Nations Convention against Corruption 2005, ratified by India in 2011.
2. A commercial organization committing offenses listed in the PCA with the intent to gain or maintain business or advantage shall be punishable.

Which of the statements given above is/are correct?

1. 1 Only

2. 2 Only
3. Both 1 and 2
4. Neither 1 nor 2

**Correct Answer : 3**

### **Explanation**

#### **Prevention of Corruption (Amendment) Act, 2018:**

- It aimed to align the PCA with the **United Nations Convention against Corruption 2005**, ratified by India in 2011. **Hence, statement 1 is correct.**
- A **commercial organization** committing offenses listed in the PCA with the intent to gain or maintain business or advantage shall be punishable. **Hence, statement 2 is correct.**

[Read More...](#)

---

#### **Question 61:**

Consider the following statements:

1. The 56<sup>th</sup> constitutional amendment led to the establishment of the special court across the country to fast-track the long-pending trials of lawmakers.
2. The special court in each State has jurisdiction over the entire State while the two in Delhi cover cases within the precincts of Delhi or "partly Delhi".

Which of the statements given above is/are correct?

1. 1 Only
2. 2 Only
3. Both 1 and 2
4. Neither 1 nor 2

**Correct Answer : 2**

### **Explanation**

### Special court:

- In 2017, the **Supreme Court ordered** that special courts be set up across the country to fast-track the long-pending trials of lawmakers. **Hence, statement 1 is not correct.**
- Following this, 12 special courts were set up across 11 States exclusively to try sitting MPs and MLAs.
- The special court in each State has jurisdiction over the **entire State** while the two in Delhi cover cases within the precincts of Delhi or “partly Delhi”. **Hence, statement 2 is correct.**

[Read More...](#)

---

### Question 62:

Regarding the Unlawful Activities (Prevention) Act,1967 consider the following statements:

1. The Act assigns absolute power to the central government, by way of which if the Centre deems an activity as unlawful then it may, by way of an Official Gazette, declare it so.
2. It only applies to the Indian citizen.
3. Under the UAPA, the investigating agency can file a charge sheet in maximum of 180 days after the arrests and the duration can be extended further after intimating the court.

How many of the statements given above are correct?

1. Only One
2. Only Two
3. All Three
4. None

**Correct Answer : 2**

### Explanation

#### Unlawful Activities (Prevention) Act,1967:

- The Act assigns **absolute power** to the central government, by way of which if the Centre deems an activity as unlawful then it may, by way of an Official Gazette, declare it so. **Hence, statement 1 is correct.**
- The UAPA applies to **both Indian and foreign nationals**, charging them similarly even if the crime is committed outside India. **Hence, statement 2 is not correct.**
- Under the UAPA, the investigating agency can file a charge sheet in **maximum of 180 days** after the arrests and the duration can be extended further after intimating the court. **Hence, statement 3 is correct.**



[Read More...](#)

---

**Question 63:**

Regarding Forest Rights Act, 2006, consider the following statements:

1. It acknowledges and grants forest rights and occupation to Forest Dwelling Scheduled Tribes (FDST) and Other Traditional Forest Dwellers (OTFD) who have lived in these forests for generations.
2. It identifies four types of rights namely Title rights, Relief and development rights, Forest management rights, and Use rights.

Which of the statements given above is/are not correct?

1. 1 Only
2. 2 Only
3. Both 1 and 2
4. Neither 1 nor 2

**Correct Answer : 4**

**Explanation**

**Forest Rights Act, 2006:**

- It **acknowledges and grants forest rights** and occupation to Forest Dwelling Scheduled Tribes (FDST) and Other Traditional Forest Dwellers (OTFD) who have lived in these forests for generations. **Hence, statement 1 is correct.**
- It identifies **four types of rights** namely Title rights, Relief and development rights, Forest management rights, and Use rights. **Hence, statement 2 is correct.**

[Read More...](#)

---

**Question 64:**

Consider the following statements:

**Statement-I:**The Constitution authorizes Parliament to reallocate seats in the Lok Sabha and State

Legislative Assemblies post-census via the Delimitation Commission Act, forming an independent Delimitation Commission.

**Statement-II:**The Delimitation Commission is appointed by the President and works in collaboration with the Election Commission.

Which one of the following is correct in respect of the above statements?

1. Both Statement-I and Statement-II are correct and Statement-II is the correct explanation for Statement I
2. Both Statement-I and Statement-II are correct and Statement-II is not the correct explanation for Statement-I
3. Statement-I is correct but Statement-II is incorrect
4. Statement-I is incorrect but Statement-II is correct

**Correct Answer : 2**

### **Explanation**

#### **Delimitation Commission:**

- The **Constitution authorizes Parliament** to reallocate seats in the Lok Sabha and State Legislative Assemblies post-census via the **Delimitation Commission Act**, forming an independent Delimitation Commission for the task. **Hence, statement-I is correct.**
- The Delimitation Commission is appointed by the **President** and works in collaboration with the Election Commission. **Hence, statement-II is correct.**

**Hence, option B is correct because both Statement-I and Statement-II are correct but Statement-II is not the correct explanation for Statement I.**

[Read More...](#)

---

#### **Question 65:**

'Closing the Women's Health Gap' Report was released by which of the following:

1. World Economic Forum
2. World Health Organisation

3. World Bank
4. International Monetary Fund

**Correct Answer : 1**

## **Explanation**

### **‘Closing the Women’s Health Gap’ Report:**

- Closing the Women’s Health Gap: A \$1 Trillion Opportunity to Improve Lives and Economies was released by the **World Economic Forum** in collaboration with **McKinsey Health Institute**.
- The report addresses the root causes of the women’s health gap (focused on science, data, care delivery, and investment) and charts several ways forward to close this gap – from **incentivizing new financing models** to investing in women-centric research and implementing more inclusive health policies.
- **Hence, option A is correct.**

[Read More...](#)

---

### **Question 66:**

Regarding Wild Life (Protection) Licensing (Additional Matters for Consideration) Rules, 2024, consider the following statements:

1. The new guidelines eliminate licensing restrictions for trading in Schedule II species, allowing for easier approval without central government consultation.
2. The new guidelines prohibit granting licenses for Schedule I wild animals without prior consultation with the Central Government, maintaining restrictions on highly protected species like tigers, elephants, and rhinos.

Which of the statements given above is/are correct?

1. 1 Only
2. 2 Only
3. Both 1 and 2
4. Neither 1 nor 2

**Correct Answer : 3**

## Explanation

### Wild Life (Protection) Licensing (Additional Matters for Consideration) Rules, 2024:

- The new guidelines **eliminate licensing restrictions** for trading in **Schedule II** species, allowing for easier approval without central government consultation. **Hence, statement 1 is correct.**
- The new guidelines **prohibit granting licenses** for Schedule I wild animals without prior consultation with the Central Government, maintaining restrictions on highly protected species like tigers, elephants, and rhinos. **Hence, statement 2 is correct.**
- The new rules outline factors for authorized officers to consider when granting licenses, including applicant capacity, supply source and manner, existing licenses, and impacts on the hunting or trade of wild animals.

[Read More...](#)

---

### Question 67:

Consider the following statements:

1. Kerala has recently declared man-animal conflict as a state-specific disaster.
2. The forest department is responsible for managing human-wildlife conflict in accordance with the Wildlife Protection Act,1972.
3. When a state-specific disaster is declared, the state disaster management authority, empowered by the Disaster Management Act,2005 takes swift and decisive action.

How many of the statements given above are correct?

1. Only One
2. Only Two
3. All Three
4. None

**Correct Answer : 3**

## Explanation

- Kerala has recently declared man-animal conflict as a state-specific disaster. **Hence, statement 1 is correct.**
- The forest department is responsible for managing human-wildlife conflict in accordance with the **Wildlife Protection Act,1972. Hence, statement 2 is correct.**
- When a state-specific disaster is declared, the state disaster management authority, empowered

by the **Disaster Management Act,2005** takes swift and decisive action. **Hence, statement 3 is correct.**

- At the state level, the Chief Minister is the ex officio chairman of the body, and several departments, including the forest department, are stakeholders. In the districts, the district disaster management authority is headed by the district collector, who is also the executive magistrate.

[Read More...](#)

---

### Question 68:

Consider the following pairs:

National Park	State
1. Jim Corbett National Park	Uttarakhand
2. Kuno National Park	Gujarat
3. Raimona National Park	Uttar Pradesh

Which of the pairs given above is/are correctly matched?

1. 1 Only
2. 1 and 2 Only
3. 2 and 3 only
4. 1, 2 and 3

**Correct Answer : 1**

### Explanation

- **Jim Corbett National Park** is a national park in India located in the Nainital district of **Uttarakhand state. Hence, pair 1 is correctly matched.**
- **Kuno National Park** is a national park and Wildlife Sanctuary in **Madhya Pradesh, India. Hence, pair 2 is not correctly matched.**
- **Raimona National Park** is located in the extreme western part of **Assam, India. Hence, pair 3 is not correctly matched.**
- **Hence, option A is correct.**

[Read More...](#)

---

**Question 69:**

Regarding U-WIN, consider the following statements:

1. U-WIN, a program digitizing India's Universal Immunization Program (UIP), is launched in pilot mode in two districts per state and Union Territory.
2. U-WIN will serve as the central hub for immunization services, including vaccination status updates, delivery outcomes, planning of RI sessions, and reports on antigen-wise coverage.

Which of the statements given above is/are correct?

1. 1 Only
2. 2 Only
3. Both 1 and 2
4. Neither 1 nor 2

**Correct Answer : 3**

**Explanation**

**U-WIN (Universal Immunization Program- Vaccine Intelligence Network):**

- U-WIN, a program **digitizing India's Universal Immunization Program (UIP)**, is launched in pilot mode in two districts per state and Union Territory. **Hence, statement 1 is correct.**
- U-WIN will serve as the central hub for immunization services, including vaccination status updates, delivery outcomes, planning of RI sessions, and reports on antigen-wise coverage. **Hence, statement 2 is correct.**
- The platform will register and vaccinate pregnant women, record delivery outcomes, register newborns, administer birth doses, and manage all vaccination events.

[Read More...](#)

---

**Question 70:**

Consider the following statements:

1. The South China Sea lies south of China, bordered by Myanmar, China, Indonesia, Malaysia, the Philippines, Taiwan, and Vietnam.
2. China's nine-dash line, originally an "eleven-dash line" until 1953, delineates its sea claims, extending up to 2,000 km from the mainland near the Philippines, Malaysia, and Vietnam.

Which of the statements given above is/are correct?

1. 1 Only
2. 2 Only
3. Both 1 and 2
4. Neither 1 nor 2

**Correct Answer : 2**

### **Explanation**

#### **South China Sea:**

- The **South China Sea** lies south of China, bordered by Brunei, China, Indonesia, Malaysia, the Philippines, Taiwan, and Vietnam. **Hence, statement 1 is not correct.**
- China's nine-dash line, originally an "eleven-dash line" until 1953, delineates its sea claims, extending up to 2,000 km from the mainland near the Philippines, Malaysia, and Vietnam. **Hence, statement 2 is correct.**

[Read More...](#)

---

#### **Question 71:**

Regarding Union Territories, consider the following statements:

1. Part VIII of the Constitution deals with union territories.
2. The President administers every union territory through an appointed administrator, who, unlike a governor, is an agent of the President and not a head of state.
3. The President can appoint the governor of a state as the administrator of an adjoining union territory, where the governor must act independently of his council of ministers.

How many of the statements given above are **not** correct?

1. Only One
2. Only Two
3. All Three
4. None



**Correct Answer : 4**

## **Explanation**

### **Union Territories:**

- **Articles 239 to 241 in Part VIII** of the Constitution deal with the union territories. **Hence, statement 1 is correct.**
- Despite belonging to a single category, union territories lack uniformity in their administrative systems.
- The President administers every union territory through an appointed administrator, who, unlike a governor, is an agent of the President and not a head of state. **Hence, statement 2 is correct.**
- The President can appoint the governor of a state as the administrator of an adjoining union territory, where the governor must act independently of his council of ministers. **Hence, statement 3 is correct.**

[Read More...](#)

---

### **Question 72:**

Regarding Central Zoo Authority, consider the following statements:

1. It is a statutory body under the Ministry of Environment, Forest and Climate Change.
2. It is chaired by the Secretary of the Ministry of Environment, Forest and Climate Change and has 15 other members.
3. The main objective of the authority is to complement and strengthen the national effort in the conservation of rich biodiversity.

How many of the statements given above are correct?

1. Only One
2. Only Two
3. All Three
4. None

**Correct Answer : 2**

## **Explanation**

### Central Zoo Authority:

- It is a **statutory body** under the Ministry of Environment, Forest and Climate Change. **Hence, statement 1 is correct.**
- It is chaired by the **Environment Minister** and has 10 members and a member-secretary. **Hence, statement 2 is not correct.**
- The main objective of the authority is to **complement and strengthen** the national effort in the conservation of rich biodiversity. **Hence, statement 3 is correct.**
- The authority provides recognition to zoos and is also tasked with regulating the zoos across the country.

[Read More...](#)

---

### Question 73:

Regarding Payments Bank, consider the following statements:

1. It is registered as a public limited company under the Companies Act 2013 and licensed under Section 22 of the Banking Regulation Act 1949.
2. 50% of the demand deposit balance must be invested in secure government securities in the form of Statutory Liquidity Ratio (SLR).

Which of the statements given above is/are correct?

1. 1 Only
2. 2 Only
3. Both 1 and 2
4. Neither 1 nor 2

**Correct Answer : 1**

### Explanation

#### Payments Bank:

- It is registered as a public limited company under the **Companies Act 2013** and licensed under Section 22 of the **Banking Regulation Act 1949**. **Hence, statement 1 is correct.**
- **75% of the demand deposit** balance must be invested in secure government securities in the form of Statutory Liquidity Ratio (SLR). **Hence, statement 2 is not correct.**

[Read More...](#)

---

### Question 74:

Regarding El Nino, consider the following statements:

1. During El Nino, global regions, including India, typically experience warmer temperatures and reduced rainfall compared to normal conditions.
2. The El Nino event is a recurring annual phenomenon.

Which of the statements given above is/are correct?

1. 1 Only
2. 2 Only
3. Both 1 and 2
4. Neither 1 nor 2

**Correct Answer : 1**

### Explanation

#### El Nino:

- During El Niño, a phase of the **El Nino Southern Oscillation (ENSO)** phenomenon, global regions, including India, typically experience warmer temperatures and reduced rainfall compared to normal conditions. **Hence, statement 1 is correct.**
- The El Nino event is **not a regular cycle**, they are not predictable and occur irregularly at two- to seven-year intervals. **Hence, statement 2 is not correct.**

[Read More...](#)

---

### Question 75:

Regarding India Stack, consider the following statements:

1. It is a set of Application Programming Interface (APIs) that allows governments, businesses, startups, and developers to utilize a unique digital Infrastructure.
2. India Stack is a government-driven effort to establish a strong digital framework facilitating diverse digital services in various sectors, with its components owned and managed by distinct agencies.
3. INDIA STACK comprises an Aadhaar for unique biometric identification, a Unified Payments Interface (UPI) for immediate digital payments, and a Digital Locker for secure storage of personal

documents.

How many of the statements given above are correct?

1. Only One
2. Only Two
3. All Three
4. None

**Correct Answer : 3**

### **Explanation**

#### **India Stack:**

- It is a set of **Application Programming Interface (APIs)** that allows governments, businesses, startups, and developers to utilize a unique digital Infrastructure. **Hence, statement 1 is correct.**
- India Stack is a **government-driven effort** to establish a strong digital framework facilitating diverse digital services in various sectors, with its components owned and managed by distinct agencies. **Hence, statement 2 is correct.**
- India Stack **comprises** an Aadhaar for unique biometric identification, a Unified Payments Interface (UPI) for immediate digital payments, and a Digital Locker for secure storage of personal documents. **Hence, statement 3 is correct.**

[Read More...](#)

---

#### **Question 76:**

Regarding the Bhashini Platform, consider the following statements:

1. It aims to facilitate convenient internet and digital service accessibility in Indian languages, including voice-based options, and promote content creation in those languages.
2. It aims to provide Artificial Intelligence and Natural Language Processing (NLP) resources in the public domain for use by Indian MSMEs, startups, and individual innovators.
3. It is not a part of the National Language Translation Mission.

How many of the statements given above are correct?

1. Only One

2. Only Two
3. All Three
4. None

**Correct Answer : 2**

## **Explanation**

### **Bhashini Platform:**

- It aims to **facilitate** convenient internet and digital service accessibility in Indian languages, including voice-based options, and promote content creation in those languages. **Hence, statement 1 is correct.**
- It aims to provide Artificial Intelligence and Natural Language Processing (NLP) resources in the public domain for use by Indian MSMEs, startups, and individual innovators. **Hence, statement 2 is correct.**
- It is a part of the National Language Translation Mission. **Hence, statement 3 is not correct.**

[Read More...](#)

---

### **Question 77:**

Consider the following:

**Statements-I:**Green Climate Fund (GCF) is a key part of the Paris Agreement and is the largest global fund dedicated to helping developing nations achieve their low-emission, climate-resilient goals outlined in their Nationally Determined Contributions (NDCs).

**Statement-II:**The Green Climate Fund (GCF) prioritizes a country-driven approach, allowing developing nations to lead programming and implementation, ensuring their ownership of financing decisions, and enabling them to translate NDC ambitions into climate action.

Which one of the following is correct in respect of the above statements?

1. Both Statement-I and Statement-II are correct and Statement-II is the correct explanation for Statement I
2. Both Statement-I and Statement-II are correct and Statement-II is not the correct explanation for Statement-I
3. Statement-I is correct but Statement-II is incorrect
4. Statement-I is incorrect but Statement-II is correct

**Correct Answer : 2**

## **Explanation**

### **Green Climate Fund (GCF):**

- **Green Climate Fund (GCF)** is a key part of the **Paris Agreement** and is the **largest global fund** dedicated to helping developing nations achieve their low-emission, climate-resilient goals outlined in their Nationally Determined Contributions (NDCs). **Hence, statement-I is correct.**
- The GCF prioritizes a **country-driven approach**, allowing developing nations to lead programming and implementation, ensuring their ownership of financing decisions, and enabling them to translate NDC ambitions into climate action, supported by capacity-building through the Readiness Programme for all developing countries. **Hence, statement-II is correct.**

**Hence, option B is correct because both Statement-I and Statement-II are correct but Statement-II is not the correct explanation for Statement I.**

[Read More...](#)

---

### **Question 78:**

Regarding the National Ayush Mission, consider the following statements:

1. It aims to improve Ayush healthcare services nationwide through Ayush Health and Wellness Centers (AHWCs) under the Ayushman Bharat scheme.
2. Compulsory components of the mission include AYUSH services, educational institutions, quality control of ASU & H drugs, and medicinal plants.
3. The Union Cabinet has recently approved the operationalization of multiple Ayush Health and Wellness Centers under a Centrally Sector Scheme.

How many of the statements given above are correct?

1. Only One
2. Only Two
3. All Three
4. None

**Correct Answer : 2**



## Explanation

### National Ayush Mission:

- It aims to improve Ayush healthcare services nationwide through **Ayush Health and Wellness Centers (AHWCs)** under the Ayushman Bharat scheme. **Hence, statement 1 is correct.**
- **Compulsory components** of the mission include AYUSH services, educational institutions, quality control of ASU & H drugs, and medicinal plants. **Hence, statement 2 is correct.**
- The Union Cabinet has recently approved the operationalization of multiple Ayush Health and Wellness Centers under a **Centrally Sponsored Scheme**. **Hence, statement 3 is not correct.**

[Read More...](#)

---

### Question 79:

Regarding the Commonwealth of Nations, consider the following statements:

1. The Commonwealth of Nations is a group of 56 countries composed mostly of former British colonies.
2. It was established by the London Declaration in 1949.
3. All its members are exclusively from developing countries.

How many of the statements given above are correct?

1. Only One
2. Only Two
3. All Three
4. None

**Correct Answer : 2**

## Explanation

### Commonwealth of Nations:

- The Commonwealth of Nations is a group of 56 countries composed mostly of former British colonies. **Hence, statement 1 is correct.**
- It was established by the **London Declaration in 1949**. **Hence, statement 2 is correct.**
- The Commonwealth includes mostly emerging economies in Africa, the Americas, Asia, and the Pacific, with Cyprus, Malta, and the U.K. as its European members, and **Australia, Canada, and New Zealand** as developed nations. **Hence, statement 3 is not correct.**

[Read More...](#)

---

**Question 80:**

Regarding Snow Leopard, consider the following statements:

1. Snow leopards are crucial as a top predator, indicating the health of their high-altitude habitat and the impacts of climate change on mountain environments.
2. Bhutan has officially declared the Snow Leopard as its national symbol, signifying its commitment to conservation and ecological balance.

Which of the statements given above is/are correct?

1. 1 Only
2. 2 Only
3. Both 1 and 2
4. Neither 1 nor 2

**Correct Answer : 1**

**Explanation**

**Snow Leopard:**

- Snow leopards are crucial as a **top predator**, indicating the health of their high-altitude habitat and the impacts of climate change on mountain environments. **Hence, statement 1 is correct.**
- **Kyrgyzstan** has officially declared the Snow Leopard(Panthera uncia) as its **national symbol**, signifying its commitment to conservation and ecological balance. **Hence, statement 2 is not correct.**

[Read More...](#)

---

**Question 81:**

Regarding NBFC, consider the following statements:

1. An NBFC, registered under the Companies Act, 1956, conducts financial activities such as lending, and investing in securities, excluding agricultural, and real estate activities.

2. These institutions are generally permitted to accept traditional demand deposits from the public.

Which of the statements given above is/are correct?

1. 1 Only
2. 2 Only
3. Both 1 and 2
4. Neither 1 nor 2

**Correct Answer : 1**

### **Explanation**

#### **Non-Banking Financial Company (NBFC):**

- An NBFC, registered under the **Companies Act, 1956**, conducts financial activities such as lending, and investing in securities, excluding agricultural, and real estate activities. **Hence, statement 1 is correct.**
- Typically, these institutions **cannot accept** conventional demand deposits from the public. **Hence, statement 2 is not correct.**
- Examples of NBFCs include investment banks, mortgage lenders, money market funds, insurance companies, equipment leasing companies, infrastructure finance companies, hedge funds, private equity funds, and P2P lenders.

[Read More...](#)

---

#### **Question 82:**

Regarding the Beti Bachao Beti Padhao Scheme, consider the following statements:

1. It is a Tri-ministerial effort of the Ministries of Women and Child Development (MW&CD), the Ministry of Health & Family Welfare (MH&FW), and the Ministry of Education.
2. The Central Government has expanded the 'Beti Bachao Beti Padhao' (BBBP) scheme to include skill development for girls in non-traditional livelihoods.

Which of the statements given above is/are **not** correct?

1. 1 Only
2. 2 Only

3. Both 1 and 2
4. Neither 1 nor 2

**Correct Answer : 4**

## **Explanation**

### **Beti Bachao Beti Padhao Scheme:**

- It is a **Tri-ministerial effort** of the Ministries of Women and Child Development (MW&CD), the Ministry of Health & Family Welfare (MH&FW), and the Ministry of Education. **Hence, statement 1 is correct.**
- The Central Government has **expanded** the 'Beti Bachao Beti Padhao' (BBBP) scheme to include skill development for girls in non-traditional livelihoods. **Hence, statement 2 is correct.**
- At the national conference on skilling in non-traditional livelihoods for girls, the Ministries of Women and Child Development (MW&CD) emphasizes the importance of convergence between various departments for providing quality education to empower girls.

[Read More...](#)

---

### **Question 83:**

Regarding the Line of Control, consider the following statements:

1. The Line of Control (LoC) emerged from the 1948 ceasefire line negotiated by the United Nations (UN) after the Kashmir War.
2. It was designated as the LoC in 1972, following the Shimla Agreement between India and Pakistan.
3. LoC is demarcated up to the Siachen Glacier- the world's highest battlefield.

How many of the statements given above are correct?

1. Only One
2. Only Two
3. All Three
4. None

**Correct Answer : 3**

## Explanation

### Line of Control:

- The Line of Control (LoC) emerged from the **1948 ceasefire** line negotiated by the United Nations (UN) after the Kashmir War. **Hence, statement 1 is correct.**
- It was designated as the LoC in 1972, following the **Shimla Agreement** between India and Pakistan. **Hence, statement 2 is correct.**
- LoC is demarcated up to the **Siachen Glacier** (Point NJ9842)- the world's highest battlefield. **Hence, statement 3 is correct.**

[Read More...](#)

---

### Question 84:

Regarding Watershed, consider the following statements:

1. A watershed (also called a drainage basin/catchment area) is an area of land that drains or “sheds” water into a specific waterbody.
2. It is not an independent drainage unit for surface water runoff.
3. One watershed is separated from another by a natural boundary known as the water divide or the ridge line.

How many of the statements given above are correct?

1. Only One
2. Only Two
3. All Three
4. None

**Correct Answer : 2**

## Explanation

### Watershed:

- A watershed (also called a drainage basin/catchment area) is an **area of land** that drains or “sheds” water into a specific waterbody. **Hence, statement 1 is correct.**
- It is an **independent drainage** unit for surface water runoff. **Hence, statement 2 is not correct.**
- One watershed is separated from another by a natural boundary known as the **water divide** or

the ridge line. **Hence, statement 3 is correct.**

[Read More...](#)

---

**Question 85:**

Consider the following statements:

1. Lingayats are the followers of the 12<sup>th</sup>-century social reformer-philosopher poet, Basaveshwara.
2. The Lingayats are devout followers of Polytheism, worshipping multiple Gods.

Which of the statements given above is/are correct?

1. 1 Only
2. 2 Only
3. Both 1 and 2
4. Neither 1 nor 2

**Correct Answer : 1**

**Explanation**

**Lingayats:**

- The term Lingayat denotes a person who wears a **personal linga**, an iconic form of the god Shiva, on the body which is received during the initiation ceremony.
- Lingayats are the followers of the 12<sup>th</sup>-century social reformer-philosopher poet, **Basaveshwara. Hence, statement 1 is correct.**
- The Lingayats are devout followers of **strict monotheism**, worshipping only one God, the Linga (Shiva). **Hence, statement 2 is not correct.**

[Read More...](#)

---

**Question 86:**

Consider the following:

**Statement-I:**The Generation Equality Forum, organized by UN Women, united governments, corporations,



and advocates worldwide to announce and commit to significant investments and policies for gender equality.

**Statement-II:**The Forum's ambitious action agenda is driven by multi-stakeholder Action Coalitions, who together developed a Global Acceleration Plan to advance gender equality.

Which one of the following is correct in respect of the above statements?

1. Both Statement-I and Statement-II are correct and Statement-II is the correct explanation for Statement I
2. Both Statement-I and Statement-II are correct and Statement-II is not the correct explanation for Statement-I
3. Statement-I is correct but Statement-II is incorrect
4. Statement-I is incorrect but Statement-II is correct

**Correct Answer : 2**

### **Explanation**

#### **Generation Equality Forum:**

- The 2021 Generation Equality Forum, **organized by UN Women**, united governments, corporations, and advocates worldwide to announce and commit to significant investments and policies for gender equality. **Hence, statement-I is correct.**
- The Forum's ambitious action agenda will be driven by **multi-stakeholder Action** Coalitions, who together developed a Global Acceleration Plan to advance gender equality. **Hence, statement-II is correct.**

**Hence, option B is correct because both Statement-I and Statement-II are correct but Statement-II is not the correct explanation for Statement I.**

[Read More...](#)

---

### **Question 87:**

Consider the following statements:

1. Article 27 of the Indian constitution prohibits human trafficking and begar.
2. Immoral Traffic (Prevention) Act, 1956 (ITPA) serves as the primary law aimed at preventing trafficking specifically for commercial sexual exploitation.
3. Interpol's Operation Storm Makers II has exposed the growing network of fraudulent activities linked to human trafficking.

How many of the statements given above are correct?

1. Only One
2. Only Two
3. All Three
4. None

**Correct Answer : 2**

### **Explanation**

#### **Human Trafficking:**

- **Article 23** of the Indian Constitution prohibits human trafficking and begar. **Hence, statement 1 is not correct.**
  - **According to Article 27**, No person shall be compelled to pay any taxes, the proceeds of which are specifically appropriated in payment of expenses for the promotion or maintenance of any particular religion or religious denomination.
- **Immoral Traffic (Prevention) Act, 1956 (ITPA)** serves as the primary law aimed at preventing trafficking specifically for commercial sexual exploitation. **Hence, statement 2 is correct.**
- **Interpol's Operation Storm Makers II** has exposed the growing network of fraudulent activities linked to human trafficking. **Hence, statement 3 is correct.**

[Read More...](#)

---

#### **Question 88:**

Consider the following statements:

1. UN's Commission On the Status Of Women is the principal global intergovernmental body exclusively dedicated to the promotion of gender equality and the empowerment of women.
2. India has been elected as a member of the Commission on the Status of Women (CSW) under the Economic and Social Council (ECOSOC) for the 2021-2025 term.

Which of the statements given above is/are correct?

1. 1 Only
2. 2 Only

3. Both 1 and 2
4. Neither 1 nor 2

**Correct Answer : 3**

### **Explanation**

#### **UN's Commission On the Status Of Women:**

- UN's Commission On the Status Of Women is the **principal global intergovernmental body** exclusively dedicated to the promotion of gender equality and the empowerment of women. **Hence, statement 1 is correct.**
- **India** has been elected as a **member** of the Commission on the Status of Women (CSW) under the Economic and Social Council (ECOSOC) for the 2021-2025 term. **Hence, statement 2 is correct.**

[Read More...](#)

---

#### **Question 89:**

Regarding INS Jatayu, consider the following statements:

1. INS Jatayu is the first Naval base in Lakshadweep.
2. Its establishment on Minicoy will enhance Navy surveillance and operations, overlooking vital Sea Lines of Communication (SLOCs) in the Arabian Sea.

Which of the statements given above is/are correct?

1. 1 Only
2. 2 Only
3. Both 1 and 2
4. Neither 1 nor 2

**Correct Answer : 2**

### **Explanation**

## INS Jatayu:

- **INS Jatayu** is the **second naval base** established in Lakshadweep following the commissioning of INS Dweeprakshak in Kavaratti in 2012. **Hence, statement 1 is not correct.**
- Establishing INS Jatayu on Minicoy Island in Lakshadweep **enhances Navy surveillance** and operations by overlooking vital Sea Lines of Communication (SLOCs) in the Arabian Sea, providing a strategic vantage point for monitoring maritime traffic. **Hence, statement 2 is correct.**

[Read More...](#)

---

## Question 90:

Regarding Parliamentary Privileges, consider the following statements:

1. Parliamentary privileges are special rights, immunities, and exemptions enjoyed by the members of the Parliament and their committees.
2. Article 194 of the Indian Constitution defines privileges for Members of Parliament, while Article 105 guarantees the same for Members of Legislative Assemblies of states.

Which of the statements given above is/are **not** correct?

1. 1 Only
2. 2 Only
3. Both 1 and 2
4. Neither 1 nor 2

**Correct Answer : 2**

## Explanation

### Parliamentary Privileges:

- **Parliamentary privileges** are special rights, immunities, and exemptions enjoyed by the members of the Parliament and their committees. **Hence, statement 1 is correct.**
- **Article 105** of the Indian Constitution defines privileges for Members of Parliament, while **Article 194** guarantees the same for Members of Legislative Assemblies of states. **Hence, statement 2 is not correct.**

[Read More...](#)

---

### Question 91:

Consider the following:

**Statement-I:**The 7-Judge Constitution Bench reversed the 1998 P.V. Narasimha Rao v. State Case, establishing that MPs and MLAs are not immune if they accept bribes for their votes.

**Statement-II:**Accepting a bribe is a separate criminal act, unrelated to the core duties of lawmakers within the Parliament or legislative assembly.

Which one of the following is correct in respect of the above statements?

1. Both Statement-I and Statement-II are correct and Statement-II is the correct explanation for Statement I
2. Both Statement-I and Statement-II are correct and Statement-II is not the correct explanation for Statement-I
3. Statement-I is correct but Statement-II is incorrect
4. Statement-I is incorrect but Statement-II is correct

**Correct Answer : 1**

### Explanation

- The **7-Judge Constitution Bench** reversed the **1998 P.V. Narasimha Rao v. State Case**, establishing that MPs and MLAs are not immune if they accept bribes for their votes. **Hence, statement-I is correct.**
- Accepting a **bribe is a separate criminal act**, unrelated to the core duties of lawmakers within the Parliament or legislative assembly. **Hence, statement-II is correct.**

**Hence, option A is correct because both Statement-I and Statement-II are correct and Statement-II is the correct explanation for Statement I.**

[Read More...](#)

---

### Question 92:

Regarding the National Health Policy (NHP), 2017, consider the following statements:

1. It aims at achieving universal health coverage and delivering quality healthcare services to all at affordable cost.
2. It's the first health policy after post-independence India.
3. It aims to increase life expectancy to 70 years from 67.5 years.

How many of the statements given above are correct?

1. Only One
2. Only Two
3. All Three
4. None

**Correct Answer : 2**

### **Explanation**

#### **National Health Policy (NHP), 2017:**

- It aims at achieving **universal health coverage** and delivering quality healthcare services to all at affordable cost. **Hence, statement 1 is correct.**
- It is the new(2017) National Health Policy after **previous ones of 1983, 2002. Hence, statement 2 is not correct.**
- It aims to **increase life expectancy** to 70 years from 67.5 years. **Hence, statement 3 is correct.**

[Read More...](#)

---

#### **Question 93:**

Consider the following statements:

1. Multilateral Free Trade Agreements involve multiple countries and aim to liberalize trade by reducing or eliminating tariffs, import quotas, and other trade restrictions.
2. Regional Free Trade Agreements, akin to multilateral FTAs, typically encompass countries in a specific geographic area, aiming to boost trade and economic collaboration within that zone.
3. Preferential Trade Agreements (PTAs) provide preferential access to specific products by reducing, not eliminating, tariffs.

How many of the statements given above are correct?

1. Only One
2. Only Two
3. All Three



4. None

**Correct Answer : 3**

## Explanation

### Trade Agreements:

- **Multilateral Free Trade Agreements** involve multiple countries and aim to liberalize trade by reducing or eliminating tariffs, import quotas, and other trade restrictions. **Hence, statement 1 is correct.**
- **Regional Free Trade Agreements**, akin to multilateral FTAs, typically encompass countries in a specific geographic area, aiming to boost trade and economic collaboration within that zone. **Hence, statement 2 is correct.**
- **Preferential Trade Agreements (PTAs)** provide preferential access to specific products by reducing, not eliminating, tariffs. **Hence, statement 3 is correct.**

[Read More...](#)

---

### Question 94:

Regarding the European Free Trade Association (EFTA), consider the following statements:

1. It was set up by the Stockholm Convention in 1960 by its then-seven Member States for the promotion of free trade and economic integration between its members.
2. The organization operates alongside the European Union, with its four member states participating in the European Single Market and the European Union Customs Union but not in the Schengen Area.

Which of the statements given above is/are correct?

1. 1 Only
2. 2 Only
3. Both 1 and 2
4. Neither 1 nor 2

**Correct Answer : 1**

## Explanation

### European Free Trade Association (EFTA):

- It was set up in 1960 (by the **Stockholm Convention in 1960**) by its then-seven Member States for the promotion of free trade and economic integration between its members. **Hence, statement 1 is correct.**
- The organization operates alongside the **European Union(EU)**, with its four member states participating in the **European Single Market and the Schengen Area**, but not in the European Union Customs Union. **Hence, statement 2 is not correct.**

[Read More...](#)

---

### Question 95:

Consider the following statements:

1. In 1921, the Imperial Bank of India was formed by the merger of the three Presidency Banks of Madras, Bombay, and Bengal.
2. Prior to 1935, the Imperial Bank of India assumed central banking duties alongside its commercial banking roles, including serving as the government's banker, a banker's bank, and a clearinghouse.
3. The government nationalized the Imperial Bank in 1954, leading to the formation of the State Bank of India.

How many of the statements given above are **not** correct?

1. Only One
2. Only Two
3. All Three
4. None

**Correct Answer : 4**

## Explanation

### State Bank of India:

- In 1921, the **Imperial Bank of India** was formed by the merger of the three Presidency Banks of Madras, Bombay, and Bengal. **Hence, statement 1 is correct.**
- Prior to 1935, the Imperial Bank of India assumed central banking duties alongside its commercial

banking roles, including serving as the government's banker, a banker's bank, and a clearinghouse. **Hence, statement 2 is correct.**

- The government **nationalized** the Imperial Bank in 1954, leading to the formation of the State Bank of India. **Hence, statement 3 is correct.**

[Read More...](#)

---

### Question 96:

Consider the following statements:

1. Penicillin G is the Active Pharmaceutical Ingredient (API) used in manufacturing several common antibiotics.
2. APIs, also called bulk drugs, are significant ingredients in the manufacture of drugs.
3. Tamil Nadu is the hub of the API manufacturing industry.

How many of the statements given above are correct?

1. Only One
2. Only Two
3. All Three
4. None

**Correct Answer : 2**

### Explanation

- **Penicillin G** is the Active Pharmaceutical Ingredient (API) used in manufacturing several common antibiotics. **Hence, statement 1 is correct.**
- APIs, also called **bulk drugs**, are significant **ingredients** in the manufacture of drugs. **Hence, statement 2 is correct.**
- The **Hubei province of China** is the hub of the API manufacturing industry. **Hence, statement 3 is not correct.**

[Read More...](#)

---

### Question 97:

Regarding Multiple Independently Targetable Re-entry Vehicle (MIRV), consider the following statements:

1. Multiple Independently Targetable Re-entry Vehicle (MIRV) allows a single missile to carry multiple warheads, each capable of targeting different locations independently.
2. The only limitation of MIRVs is that they can only be launched from land-based platforms.

Which of the statements given above is/are correct?

1. 1 Only
2. 2 Only
3. Both 1 and 2
4. Neither 1 nor 2

**Correct Answer : 1**

### **Explanation**

#### **Multiple Independently Targetable Re-entry Vehicle (MIRV):**

- Multiple Independently Targetable Re-entry Vehicle (MIRV) allows a single missile to carry multiple warheads (3-4), each capable of targeting different locations independently. **Hence, statement 1 is correct.**
- MIRVs can be launched from **both** land-based platforms and **sea-based platforms**, such as submarines, expanding their operational flexibility and range. **Hence, statement 2 is not correct.**

[Read More...](#)

---

#### **Question 98:**

Consider the following statements:

1. The Agni-5 test flight was the first in India to demonstrate Multiple Independently Targetable Re-entry Vehicle (MIRV) technology, enabling the deployment of multiple warheads to various locations in a single launch.
2. Agni, developed by DRDO, is an indigenously produced intercontinental ballistic missile (ICBM) with a range exceeding 5,000 km.
3. Presently, the United States, the United Kingdom, Sweden, Russia, China, and India possess MIRV technology.

How many of the statements given above are correct?

1. Only One
2. Only Two
3. All Three
4. None

**Correct Answer : 2**

### **Explanation**

- The **Agni-5** test flight was the first in India to demonstrate Multiple Independently Targetable Re-entry Vehicle (MIRV) technology, enabling the deployment of multiple warheads to various locations in a single launch. **Hence, statement 1 is correct.**
- The Defence Research and Development Organisation (**DRDO**) has successfully developed Agni, an indigenously built intercontinental ballistic missile (ICBM) capable of carrying nuclear warheads with a range exceeding **5,000 km**, utilizing a three-stage solid-fueled engine, and has been rigorously tested since 2012, including tests to assess its night-time capabilities as of December 2022. **Hence, statement 2 is correct.**
- Major nuclear powers like the United States, the United Kingdom, **France**, Russia, China, and India possess MIRV technology. **Hence, statement 3 is not correct.**

[Read More...](#)

---

### **Question 99:**

Regarding the Baltic Sea, consider the following statements:

1. It is a part of the North Atlantic Ocean, situated in Northern Europe.
2. It stretches from southern Denmark to nearly the Arctic Circle, acting as a boundary between the Scandinavian Peninsula and continental Europe.
3. It is the world's smallest body of brackish water, with lower salinity levels than the World's Oceans, because of the inflow of fresh water from the surrounding land and its shallow depth.

How many of the statements given above are correct?

1. Only One
2. Only Two
3. All Three
4. None

**Correct Answer : 2**

## Explanation

### Baltic Sea:

- It is part of the **North Atlantic Ocean**, situated in Northern Europe. **Hence, statement 1 is correct.**
- It stretches from southern Denmark to nearly the Arctic Circle, acting as a **boundary** between the Scandinavian Peninsula and continental Europe. **Hence, statement 2 is correct.**
- It is the **world's largest body of brackish water**, with lower salinity levels than the World's Oceans, because of the inflow of fresh water from the surrounding land and its shallow depth. **Hence, statement 3 is not correct.**



[Read More...](#)

### Question 100:

Consider the following statements:



1. Strategic nuclear weapons are designed for broader objectives, like targeting cities or larger strategic areas, with significant war-waging capabilities.
2. Tactical Nuclear Weapons (TNWs) are utilized for targeted battlefield advantages, aiming to destroy enemy targets in a localized area with minimal radioactive fallout and widespread damage.
3. India does not possess Tactical Nuclear Weapons (TNWs).

How many of the statements given above are correct?

1. Only One
2. Only Two
3. All Three
4. None

**Correct Answer : 2**

### **Explanation**

#### **Nuclear Weapons:**

- Strategic nuclear weapons are designed for broader objectives, like targeting cities or larger strategic areas, with significant war-waging capabilities. **Hence, statement 1 is correct.**
- Tactical Nuclear Weapons (TNWs) are utilized for targeted battlefield advantages, aiming to destroy enemy targets in a localized area with minimal radioactive fallout and widespread damage. **Hence, statement 2 is correct.**
- The Federation of American Scientists identifies nine countries possessing tactical nuclear weapons: Russia, the United States, China, France, the United Kingdom, Pakistan, **India**, Israel, and North Korea. **Hence, statement 3 is not correct.**

[Read More...](#)

---

#### **Question 101:**

Regarding Biodiversity Hotspots, consider the following statements:

1. A hotspot must have a high percentage of plant life found nowhere else on the planet, with at least 1,500 species of vascular plants, representing over 0.5% of the world's total.
2. The habitat must have lost a minimum of 70% of its original area, indicating that it is now threatened, with 30% or less of its original natural vegetation remaining.

Which of the statements given above is/are **not** correct?

1. 1 Only
2. 2 Only
3. Both 1 and 2
4. Neither 1 nor 2

**Correct Answer : 4**

### **Explanation**

#### **Biodiversity Hotspots:**

- A hotspot must have a high percentage of plant life **found nowhere** else on the planet, with at least 1,500 species of vascular plants, representing over 0.5% of the world's total. **Hence, statement 1 is correct.**
- The habitat must have lost a minimum of 70% of its original area, indicating that it is now threatened, with 30% or less of its original natural vegetation remaining. **Hence, statement 2 is correct.**

[Read More...](#)

---

#### **Question 102:**

Pushpagiri Wildlife Sanctuary (PWS) is located in which of the state?

1. Karnataka
2. Assam
3. Manipur
4. Tamil Nadu

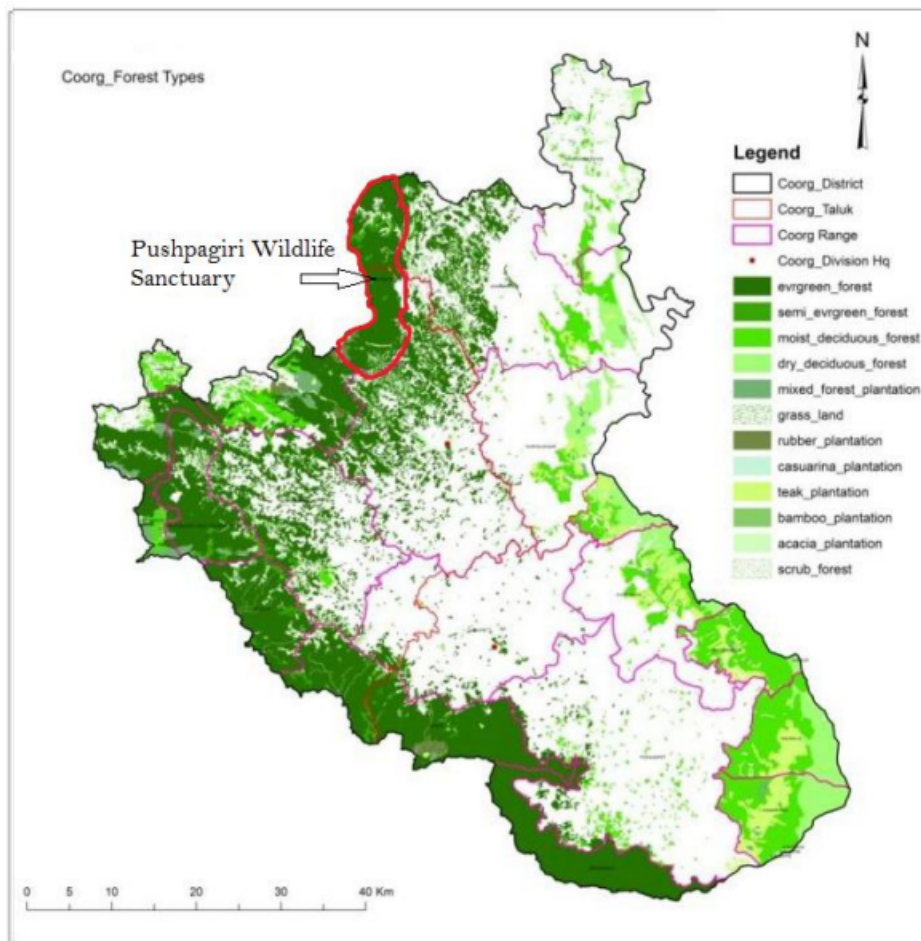
**Correct Answer : 1**

### **Explanation**

- The **Pushpagiri Wildlife Sanctuary (PWS)**, spanning 102.59 square kilometers in **Karnataka's**

Kodagu district, houses rare and endangered bird species like the great pied hornbill, Malabar trogon, and Nilgiri blackbird, along with diverse mammals such as elephants, tigers, slender lorises, Nilgiri martens, and bonnet macaques.

- Hence, option A is correct.



[Read More...](#)

### Question 103:

Consider the following statements:

1. A Giffen good is a low-income, non-luxury product for which demand increases as the price increases and vice versa.
2. A Giffen good has an upward-sloping demand curve which is contrary to the fundamental laws of demand which are based on a downward-sloping demand curve.
3. Demand for Giffen goods is heavily influenced by a lack of close substitutes and income pressures.

How many of the statements given above are correct?

1. Only One

2. Only Two
3. All Three
4. None

**Correct Answer : 3**

### **Explanation**

#### **Giffen Goods:**

- A Giffen good is a **low-income**, non-luxury product for which demand increases as the price increases and vice versa. **Hence, statement 1 is correct.**
- A Giffen good has an **upward-sloping demand curve** which is contrary to the fundamental laws of demand which are based on a downward-sloping demand curve. **Hence, statement 2 is correct.**
- Demand for Giffen goods is heavily influenced by a **lack of close substitutes** and income pressures. **Hence, statement 3 is correct.**

[Read More...](#)

---

#### **Question 104:**

Consider the following:

**Statement-I:** Bt cotton is genetically modified through the insertion of genes from *Bacillus thuringiensis*, a soil bacterium, to create transgenic plants.

**Statement-II:** These proteins effectively kill major cotton caterpillar pests like tobacco budworm and bollworm larvae.

Which one of the following is correct in respect of the above statements?

1. Both Statement-I and Statement-II are correct and Statement-II is the correct explanation for Statement I
2. Both Statement-I and Statement-II are correct and Statement-II is not the correct explanation for Statement-I
3. Statement-I is correct but Statement-II is incorrect
4. Statement-I is incorrect but Statement-II is correct

**Correct Answer : 1**

## **Explanation**

### **Bt Cotton:**

- Bt cotton is **genetically modified** through the insertion of genes from *Bacillus thuringiensis*, a soil bacterium, to create transgenic plants. **Hence, statement-I is correct.**
- These proteins effectively kill major cotton **caterpillar pests** like tobacco budworm and bollworm larvae. **Hence, statement-II is correct.**

**Hence, option A is correct because both Statement-I and Statement-II are correct and Statement-II is the correct explanation for Statement I.**

[Read More...](#)

---

PDF Refernece URL: <https://www.drishtiias.com/print-quiz/4427>

