



## **Drishti IAS Coaching in Delhi, Online IAS Test Series & Study Material**

 [drishtiias.com/printpdf/bihar-public-service-commission-bpsc-gk-state-pcs-english](https://drishtiias.com/printpdf/bihar-public-service-commission-bpsc-gk-state-pcs-english)

### **Bihar Public Service Commission (BPSC) GK**

#### **BIHAR**

Formation	<b>March 22, 1912</b>
Capital	<b>Patna</b>
Population	<b>10,40,99,452</b>
Area	<b>94,163 sq. km.</b>
Total Districts	<b>38</b>
High Court	<b>Patna</b>



## State Symbol

**State Animal : Bull**



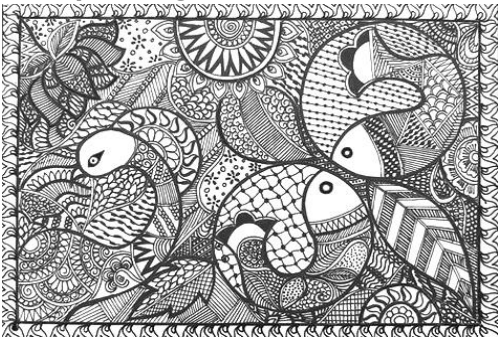
**State Flower: Marigold**



**State Bird: Sparrow**



**Main painting : Madhubani**



**State Tree: Peepal**



**Main Festival: Chhath Puja**



**Bihar : General Information**

---

- State name – **Bihar**, it is believed that due to the abundance of **Buddhist monasteries (viharas)** in the region, This region was named Bihar. It is noteworthy that in ancient times this area was a major center of Buddhism.
- Statehood Day (Bihar Diwas) – **March 22, 1912**
- State capital – **Patna** (In ancient times **Pataliputra**, **Pushppur**, **Kusumpur** and **Azimabad** have been other names.)
- Geographical location of the state – **24°20'10" to 27°31'15" North Latitude and between 83°19'50" to 88°17'40" East Longitude.**
- The area of the state is – **94,163 sq. km. (13<sup>th</sup> largest state in the country)**
- Length from North to South – **345 km.**
- Length from East to West – **483 km.**
- States bordering the state – **3 [West Bengal (East), Uttar Pradesh (West) and Jharkhand (South)]**
- The country bordering the state – **Nepal (in the north)**
- Total geographical area (all over India) – **2.86%**
- Districts bordering Nepal – **7 [West Champaran, East Champaran, Sitamarhi Madhubani, Supaul, Araria and Kishanganj]**

- District bordering Uttar Pradesh – **8 [(Rohtas, Kaimur, Buxar, Bhojpur, Saran, Siwan) Gopalganj and West Champaran]**
- Districts bordering West Bengal – **3 [Kishanganj, Purnia and Katihar]**
- Districts bordering Jharkhand – **8 [Bhagalpur, Banka, Jamui, Nawada, Gaya, Aurangabad, Rohtas and Katihar]**
- District adjoining Bihar's capital Patna – **9[Arwal, Jehanabad, Nalanda, Lakhisarai, Begusarai, Samastipur, Vaishali, Saran, Bhojpur]**
- Largest district in terms of area – **West Champaran**
- Smallest district in terms of area – **Sheohar**
- Northernmost District – **West Champaran**
- Southernmost district – **Gaya**
- Western most district – **Kaimur**
- Easternmost District – **Kishanganj**
- State Climate – **Monsoon**
- Normal rainfall – **1,205 mm**
- Highest rainfall district – **Kishanganj**
- The districts with minimum rainfall – **Kaimur, Rohtas, Aurangabad and Gaya.**
- Hottest place – **Gaya**
- The average distance from the beach is – **200 km.**
- The average height above sea level is – **173 feet (about 53 m).**
- Total Population of the State (Census– 2011) – **10,40,99,452 (3rd place in the country)**
- Male – **5,42,78,157 in the total population of the state**
- Female – **4,98,21,295 in the total population of the state**
- Percentage share of total population of India – **8.60% In terms of total population, the third place in the country (first – Uttar Pradesh, while the second – Maharashtra)**
- Decade growth in population (2001–2011) – **25.42% (6th rank in the country)**
- Population Density (person/sq.km.) – **1,106 (1st in the country, Census– 2011)**
- Most Populated District – **Patna (58,38,465)**
- District with minimum population – **Sheikhpura (6,36,342)**
- District with highest decadal growth rate of population – **Madhepura (31.12%)**
- District with lowest decadal growth rate of population – **Gopalganj (19.02%)**
- District with highest population density – **Sheohar (1880 persons/sq.km.)**
- District with minimum population density – **Kaimur (Bhabua) (488 persons/sq.km.)**
- Literacy rate (as per 2011, Census) – **approximately 61.80% (71.20% male, 51.50% female)**
- District with highest per capita income – **Patna**
- District with minimum per capita income – **Sheohar (Madhepura in other source)**
- District with highest literacy rate – **Rohtas (73.37%)**
- District with lowest literacy rate – **Purnia (51.08%)**
- District with highest male literacy rate – **Rohtas (82.88%)**
- District with lowest male literacy rate – **Purnia (59.06%)**
- District with highest female literacy rate – **Rohtas (62.97%)**
- District with lowest female literacy rate – **Saharsa (41.68%)**
- Sex Ratio – **918**
- District with highest sex ratio – **Gopalganj (1021)**
- District with lowest sex ratio – **Munger (876)**
- Child Sex Ratio (0–6 Years) – **935**

- District with highest child sex ratio – **Kishanganj (971)**
- District with lowest child sex ratio – **Vaishali (904)**
- District with highest urban population – **Patna (25,14,590)**
- District with minimum urban population – **Sheohar (28,116)**
- Percentage of rural population to total population – **88.71%**
- Percentage of urban population to total population – **11.29%**
- Highest percentage of urban population – **Patna (43.07%)**
- Minimum percentage of urban population – **Samastipur (3.47%)**
- Scheduled Castes (SC) – **15.9% of the total population**
- District with Highest Scheduled Caste Population – **Gaya (13,343,51)**
- District with highest percentage of SC population – **Gaya (30.39%)**
- District with minimum scheduled caste population – **Sheohar (96,655)**
- District with Minimum Scheduled Caste Population Percentage – **Kishanganj (6.69%)**
- Scheduled Tribes (ST) of the total population – **1.3%**
- District with highest ST population – **West Champaran (250046)**
- District with minimum ST population – **Sheohar (318)**
- District with highest percentage of ST population – **West Champaran (6.35%)**
- Districts with minimum percentage of ST population – **Aurangabad, Khagaria and Samastipur.**
- No. of Administrative Divisions – **09 (Koshi, Darbhanga, Saran, Bhagalpur, Patna, Tirhut, Munger, Magadha and Purnia)**
- No. of Districts – **38**
- No. of Sub– Divisions – **101**
- Block No.– **534**
- No. of Panchayats – **8,406**
- No. of Police Stations – **853**
- No. of Revenue Villages – **45,103**
- Number of Lok Sabha Members – **40**
- No. of Rajya Sabha members – **16**
- Number of seats reserved for Scheduled Castes in Lok Sabha – **6**
- Legislature – **Bicameral (upper house – Legislative council, Lower house – Assembly)**
- Number of Vidhan Sabha Members – **243**
- Number of Legislative Council Members – **75**
- State Symbol – **Bodhi tree (located between two swastikas)**
- Official language – **Hindi**
- Second official language – **Urdu**
- State fish – **Mangur**
- State anthem – **Mere Bharat Ke Kanth har, Tum Ko Shat– Shat Vandan Bihar...**
- State Prayer – **Meri raftaar pe suraj ki kiran naaz kare...**
- No. of Universities – **23**
- Folk dances – **Kathghodwa, Chhau, Launda, Dhobia, Jhijhiya, Jharni, Karma and Domkach.**
- Major Forest Type – **Deciduous**